

USB Multi-interface Adapter Board for SOSA Systems

The Problem:

VPX cards typically have 1x RS-232 port for Management / configuration setup.

VPX cards hosting FPGAs or other programmable devices also have at least 1x JTAG port.

SOSA standard defines specific pin out definitions for a limited number of D38999 class connectors, and all SOSA connectors defined in the Technical standard have no more than 1x USB port, 1x RS-232 port, no JTAG ports.

1. How does one configure VPX systems for SOSA with multiple VPX cards having more than 2+ RS-232 ports and/or 2+ JTAG ports?
2. How Does one interface with I2C or SPI devices or sensors that do not support the VITA46.11 (IPMI)?

The Solution:

Connect all these RS-232 / JTAG / I2C / SPI ports to a Dawn 06-1020853 USB 2.0 multi-interface adapter card, and combine all these ports (RS-232 / JTAG / I2C / SPI) into a single USB access interface which is compatible with SOSA D38999 connector pinout standards.

No more need for a Non-SOSA standard connector with 2+ RS-232 / JTAG / other ports for front panel access to internal VPX card system configuration.

Have more than 8x RS-232 / JTAG / other interface ports, no problem, connect multiple 853 via built in USB expansion port to additional port groups (8 interface per 853 card).



Technical spec:

Voltage: +3.3V

Current: 300mA typical
80mA Idle

Size: L/W/H: 2.5" x 1.7" x 0.5"

-40°C to 85°C industrial operating temperature range.

Additional stacking options

Additional info:

*RS232/RS422/RS485 UART Transfer Data Rate up to 12Mbaud. (RS232 Data Rate limited by external level shifter).

*RTS/CTS available with external Level translator.

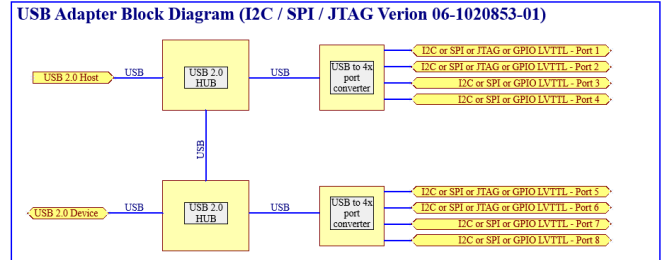
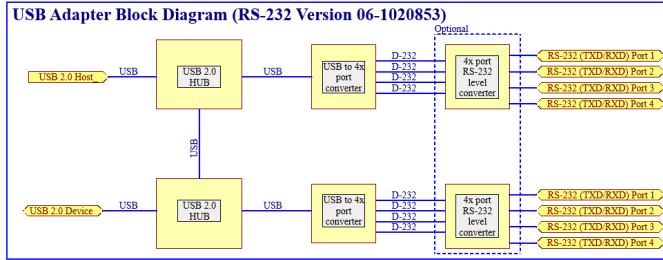
* Up to 2 ports configurable for RS-485 contact factory (Auto-transmit enable control for RS485 serial applications using TXDEN)

* UART Interface supports 7/8 bit data, 1/2 stop bits, and Odd/Even/Mark/Space/No Parity

* UHCI/OHCI/EHCI host controller compatible.

* USB Bulk data transfer mode (512 byte packets in High Speed mode).

The Dawn 06-1020853 USB multi-interface adapter card is a compact unit measuring 2.5" x 1.7" with a 50 pin Samtec SFM connector and 2-56 mounting hardware for rugged host PCB connection.



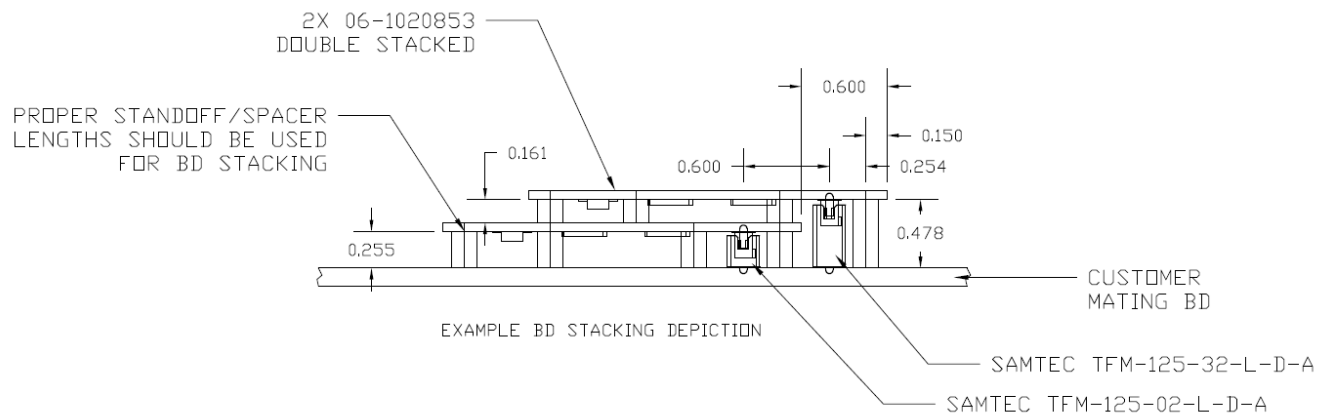
Order Options:

06-1020853 = RS-232 only version

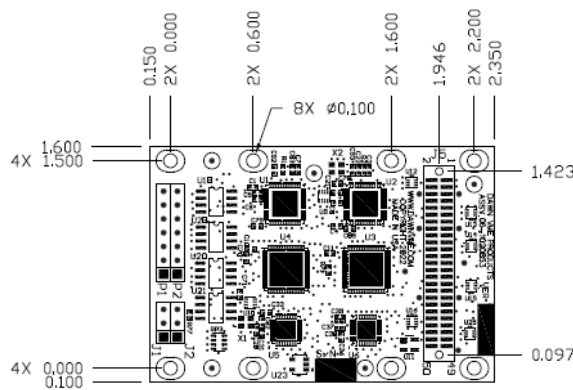
061020853-01 = i2C / SPI / JTAG / GPIO version

06-1020854 = Host Test PCB for docking 853 card.

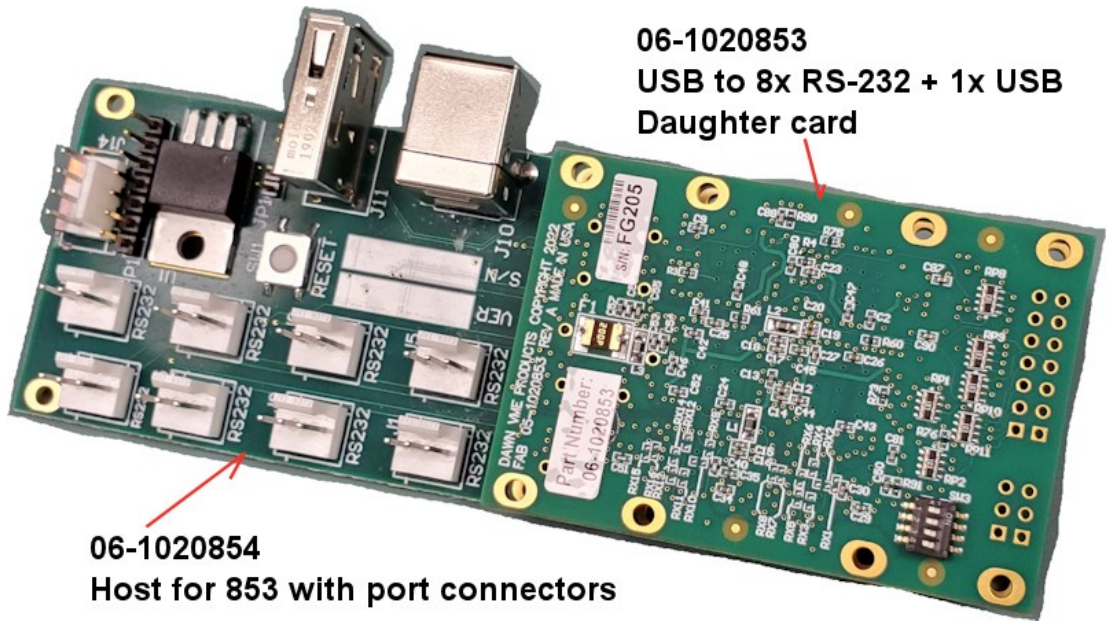
Contact Factory for custom mixed port options



Board size and mounting hole location



Optional 06-1020854 Host card for testing 06-1020853 functions in lab applications.



**06-1020854
Host for 853 with port connectors**

**06-1020853
USB to 8x RS-232 + 1x USB
Daughter card**

