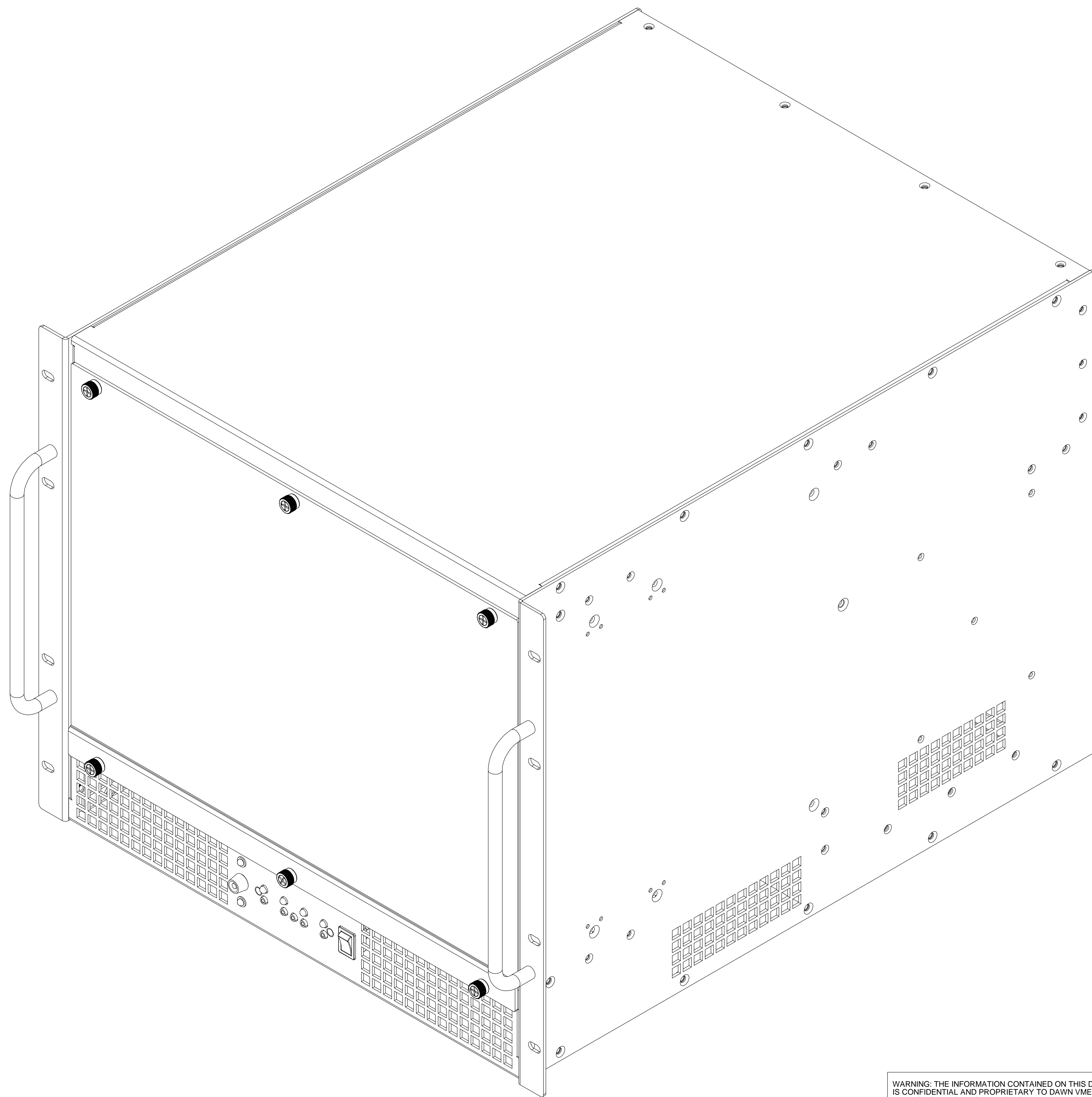


REVISIONS			
REV.	DESCRIPTION	APPD	DATE
A	RELEASE PER ECO 6201	JH	6/4/09

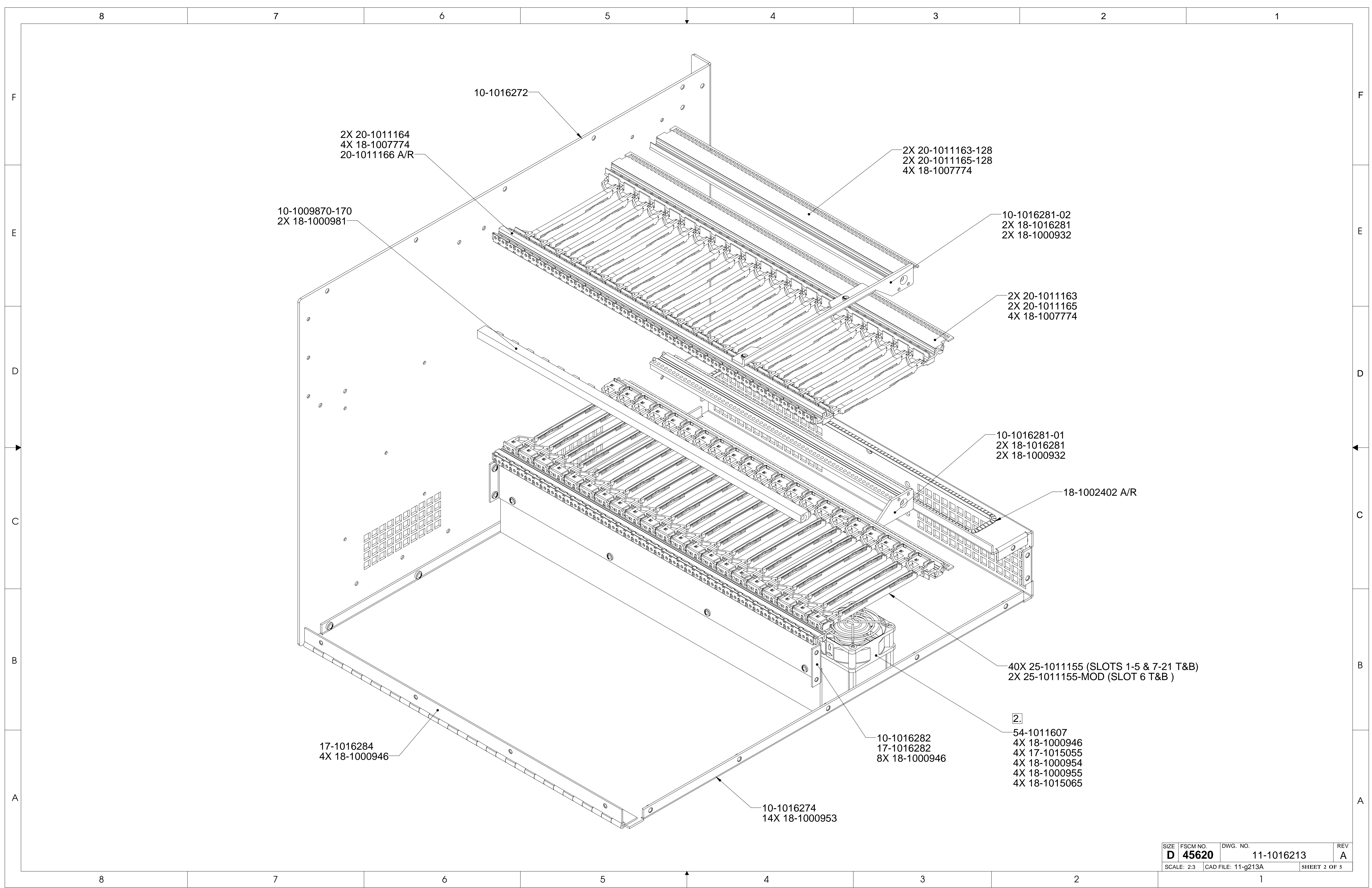


NOTES: UNLESS OTHERWISE SPECIFIED.

1. POWER SUPPLY WIRING MUST BE CONFIGURED SO THAT POWER SUPPLY CAN BE ROTATED 90 DEG CLOCK-WISE WITH REAR PANEL LOWERED.
2. REFERENCE SEPARATE WIRING DIAGRAM 57-1016213.
3. INSTALL OVER-LAY 08-1016213 ON FAR SIDE OF BACKPLANE, SLOTS 6 THRU 21.

WARNING: THE INFORMATION CONTAINED ON THIS DRAWING IS CONFIDENTIAL AND PROPRIETARY TO DAWN VME PRODUCTS, INC. ANY USE OF THIS INFORMATION OTHER THAN FOR THE PURPOSE IT WAS ORIGINALLY PROVIDED IS STRICTLY PROHIBITED. THIS DRAWING MAY NOT BE REPRODUCED IN FULL OR IN PART NOR INFORMATION CONTAINED UPON IT BE CONVEYED, DISCLOSED, OR USED WITHOUT THE EXPRESSED WRITTEN CONSENT OF DAWN VME PRODUCTS, INC. ANY VIOLATIONS OF THE ABOVE WILL BE PROSECUTED TO THE FULLEST EXTENT OF THE LAW.

UNLESS OTHERWISE SPECIFIED: DIMENSIONS ARE IN INCHES TOLERANCES ARE: FRACTIONAL <N/A> XX ±.010 XXX ±.005 MATL:		INTERNAL REF		Dawn VME Products, Inc. 47915 Westinghouse Drive, Fremont, Ca. 94539	
FINISH		APPROVALS	DATE	TITLE:	
DO NOT SCALE DRAWING		ENGR J HERNANDEZ	6/4/09	CHASSIS, 9U, VME64X, LPQ350 P/S, 160/220 C/C	
		DRAWN J HERNANDEZ	6/4/09	SIZE	REV
		ENG APPR.		D 45620	A
		ISSUED		DWG. NO.	
				11-1016213	
				SCALE: 2:3	SHEET 1 OF 5
				CAD FILE: 11-g213A	



2X 20-1011164
4X 18-1007774
20-1011166 A/R

10-1016272

2X 20-1011163-128
2X 20-1011165-128
4X 18-1007774

10-1009870-170
2X 18-1000981

10-1016281-02
2X 18-1016281
2X 18-1000932

2X 20-1011163
2X 20-1011165
4X 18-1007774

10-1016281-01
2X 18-1016281
2X 18-1000932

18-1002402 A/R

40X 25-1011155 (SLOTS 1-5 & 7-21 T&B)
2X 25-1011155-MOD (SLOT 6 T&B)

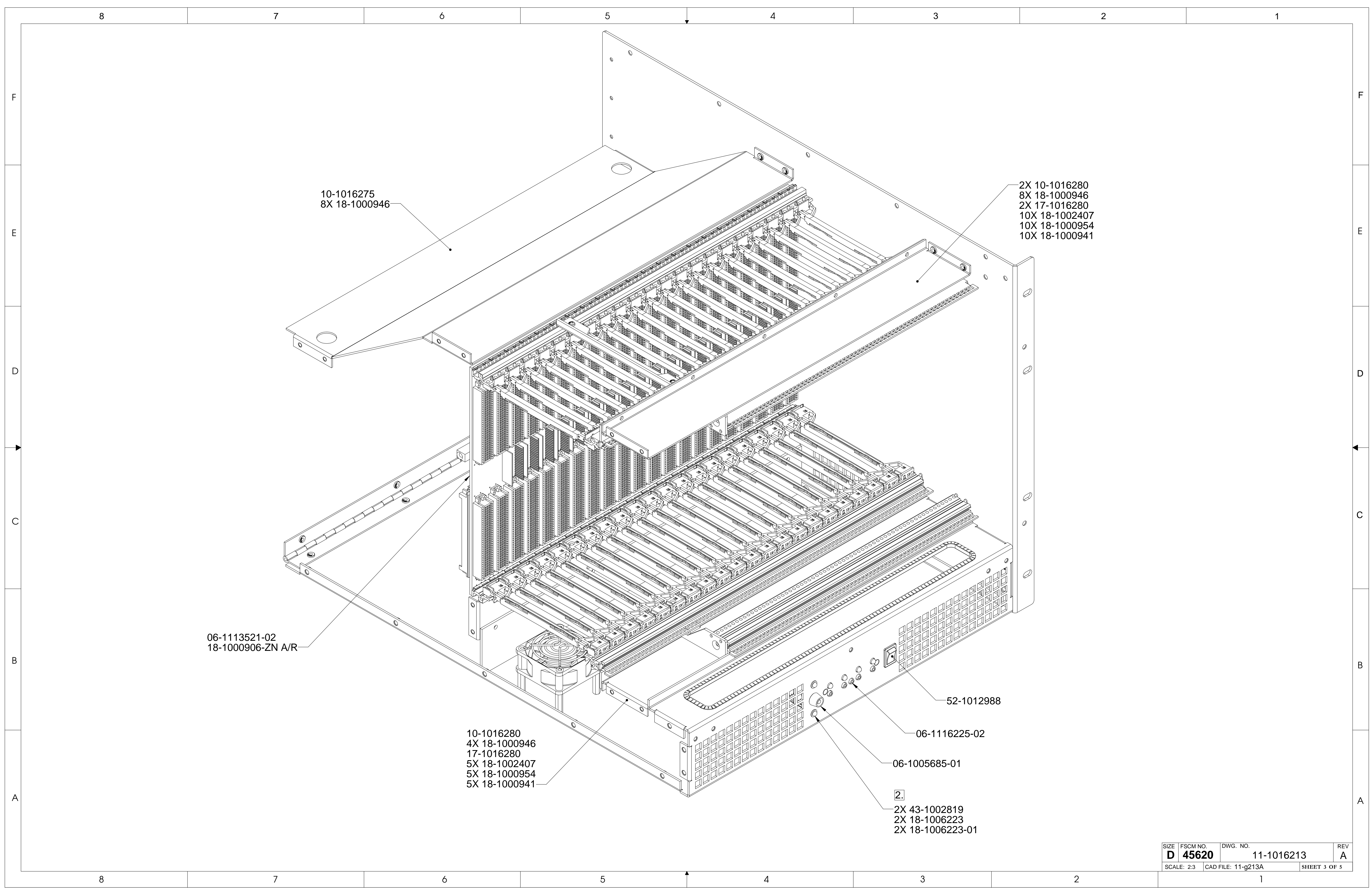
17-1016284
4X 18-1000946

10-1016282
17-1016282
8X 18-1000946

2.
54-1011607
4X 18-1000946
4X 17-1015055
4X 18-1000954
4X 18-1000955
4X 18-1015065

10-1016274
14X 18-1000953

SIZE	FSCM NO.	DWG. NO.	REV
D	45620	11-1016213	A
SCALE: 2:3		CAD FILE: 11-g213A	SHEET 2 OF 5



10-1016275
8X 18-1000946

2X 10-1016280
8X 18-1000946
2X 17-1016280
10X 18-1002407
10X 18-1000954
10X 18-1000941

06-1113521-02
18-1000906-ZN A/R

10-1016280
4X 18-1000946
17-1016280
5X 18-1002407
5X 18-1000954
5X 18-1000941

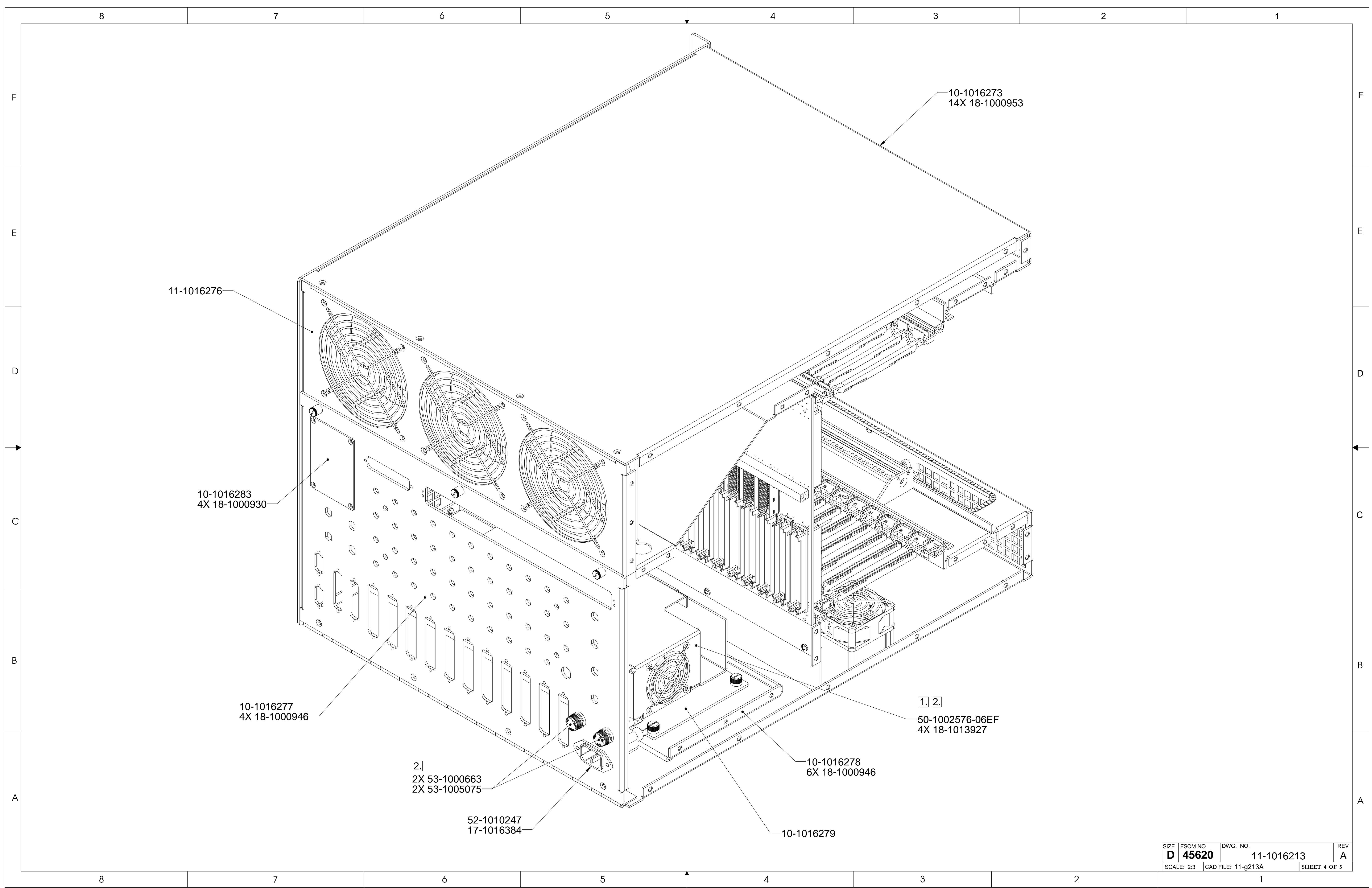
52-1012988

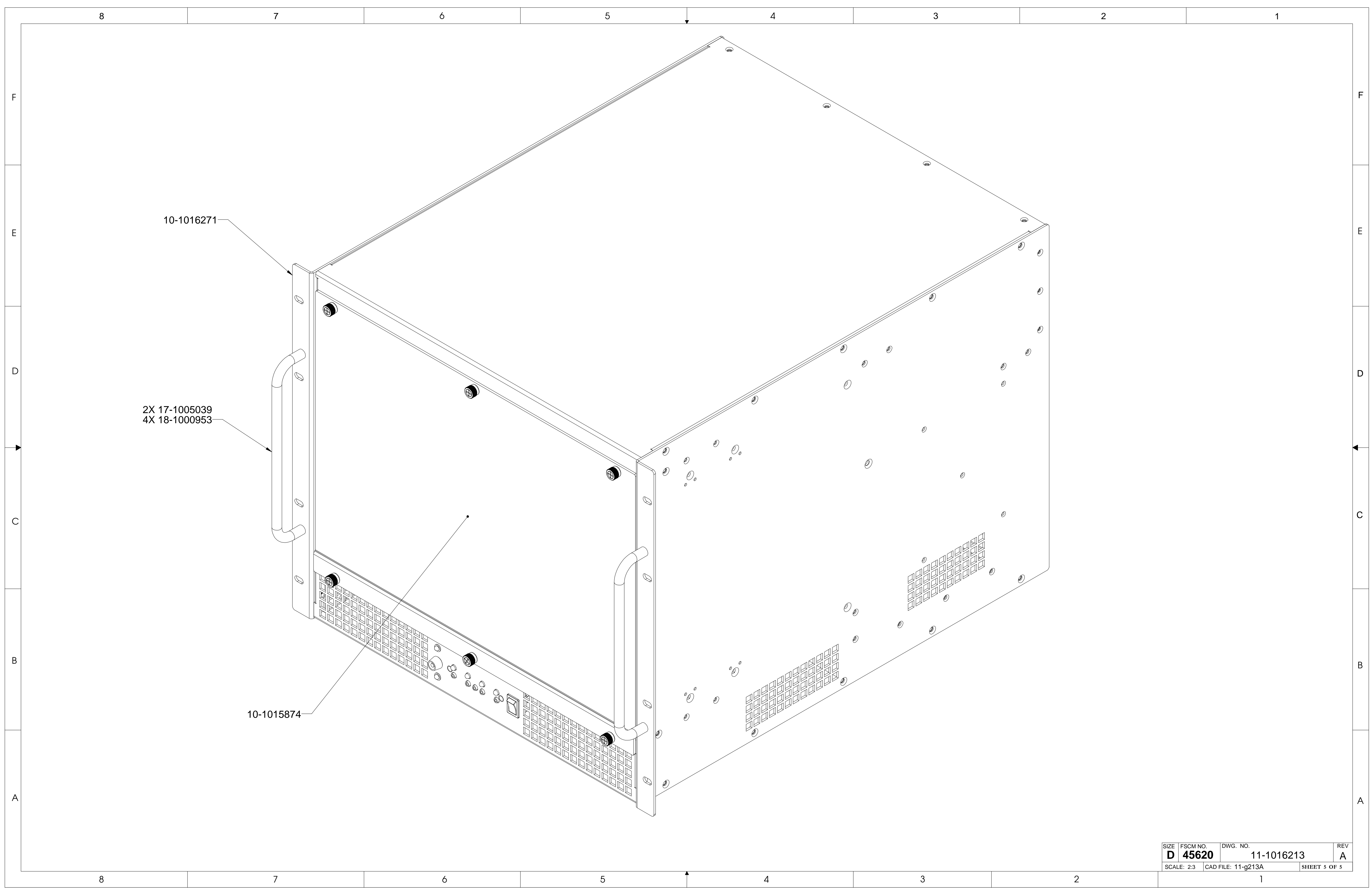
06-1116225-02

06-1005685-01

2.
2X 43-1002819
2X 18-1006223
2X 18-1006223-01

SIZE	FSCM NO.	DWG. NO.	REV
D	45620	11-1016213	A
SCALE: 2:3		CAD FILE: 11-g213A	SHEET 3 OF 5





SIZE	FSCM NO.	DWG. NO.	REV
D	45620	11-1016213	A
SCALE: 2:3		CAD FILE: 11-g213A	SHEET 5 OF 5