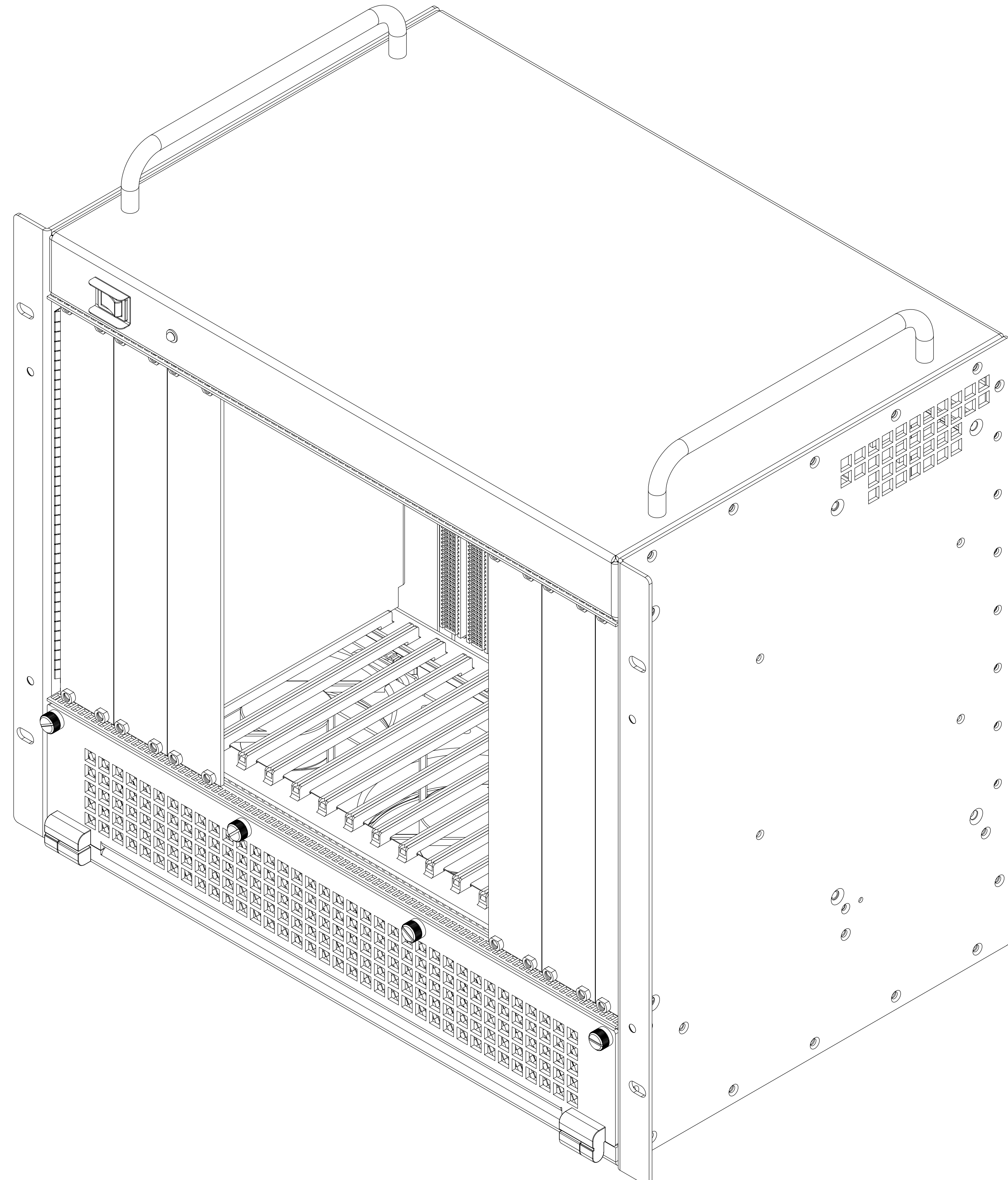
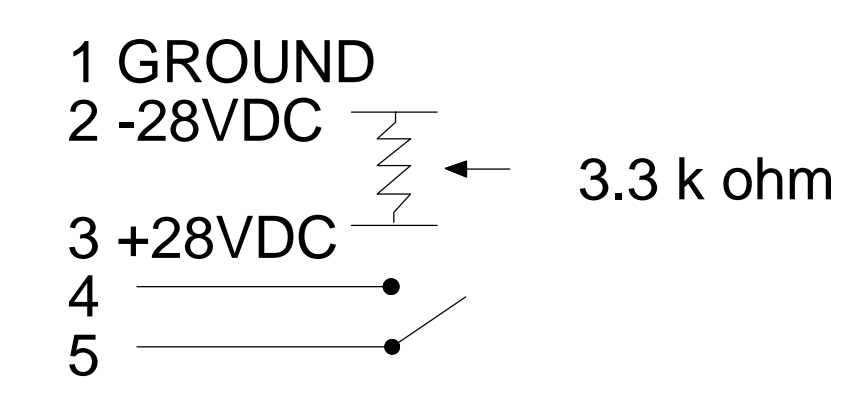


REVISIONS			
REV.	DESCRIPTION	APPD	DATE
A	RELEASE PER ECO 4625	JH	3/10/05
B	UPDATED PER ECO 4721	JH	5/16/05



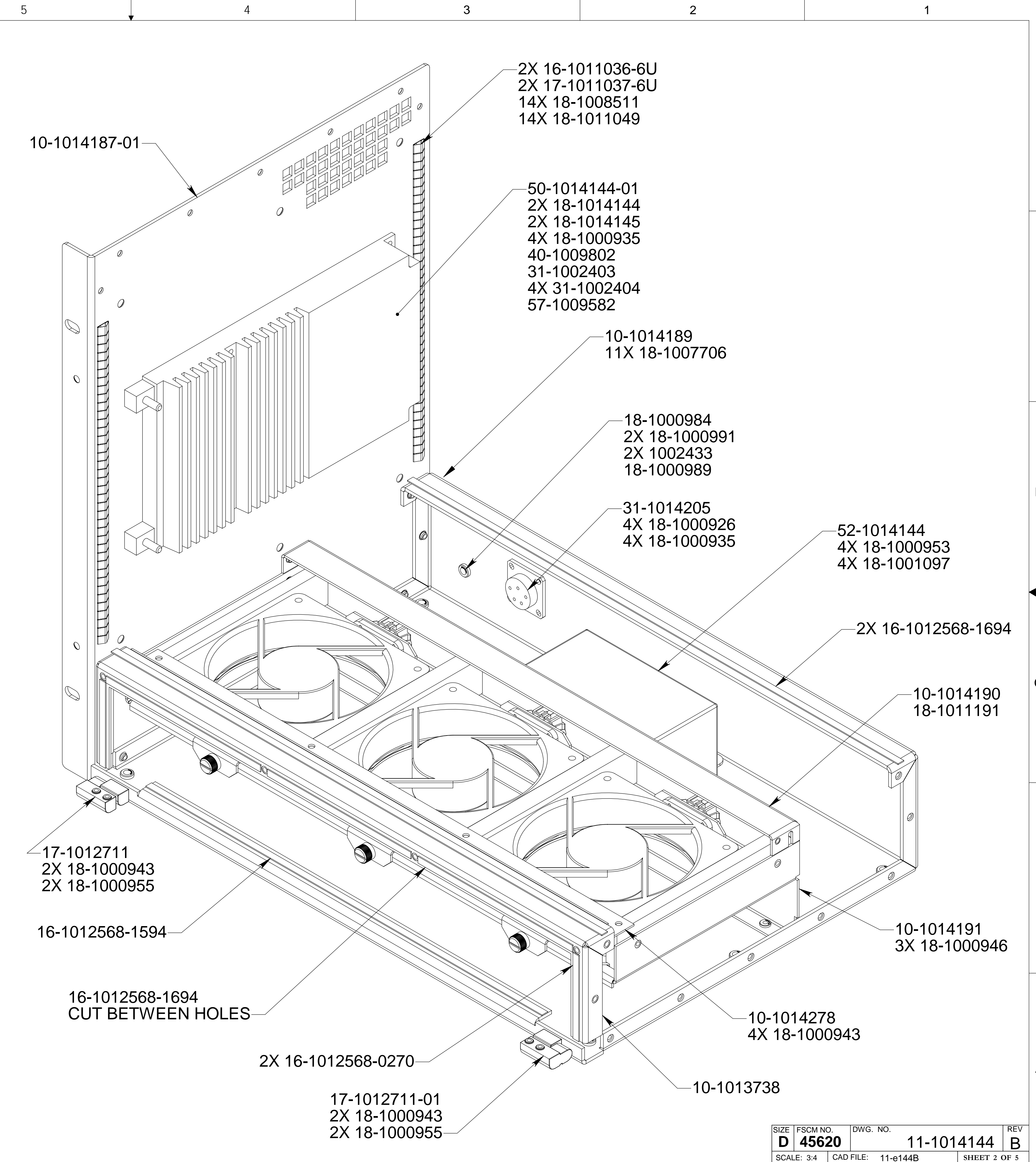
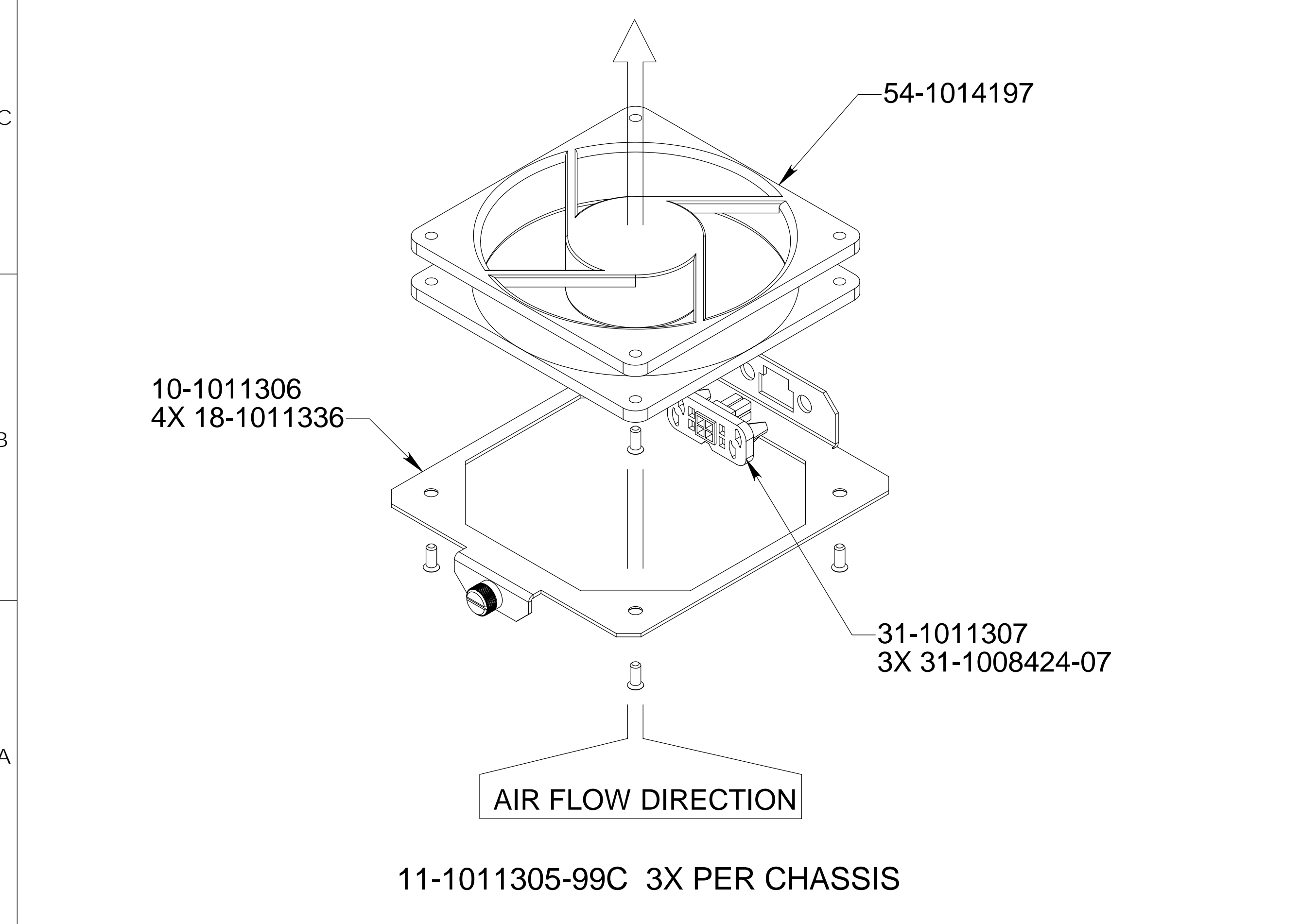
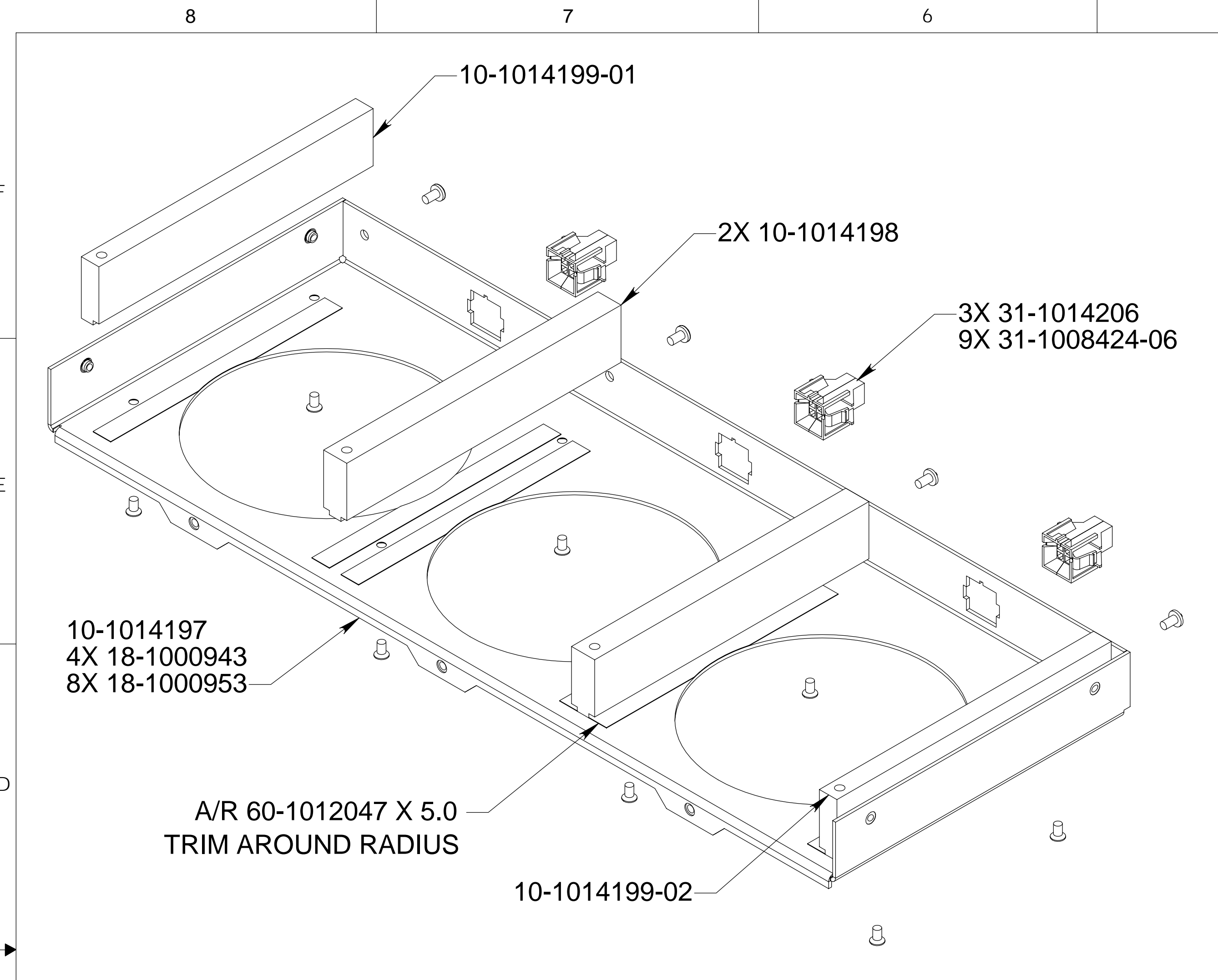
NOTES: UNLESS OTHERWISE SPECIFIED.

- FAN CONNECTOR WIRING AS FOLLOWS,
PIN 1, +12V
PIN 2, TACH (ON FAN ASSY ONLY)
PIN 3, +12V RETURN
- POWER SUPPLIES WIRED DIRECTLY TO LINE FILTER, ON/OFF SWITCH WILL BE USED TO TURN POWER SUPPLIES ON/OFF VIA POWER SUPPLIES REMOTE INHIBIT.
- USE 15A 12V MODULE FOR +12V TO BACK PLANE AND FAN POWER.
- WIRE FRONT LED TO +5V AT BACK PLANE.
- WIRE 5 POS INLET CONNECTOR AS FOLLOWS,
PIN 1-2, +28V INPUT
PIN 3-4, +28V INPUT RETURN
PIN 5, SAFETY GROUND.
- PROVIDE 2X DISK DRIVE CABLES WITH "Y" CABLES FOR CUSTOMER USE, DISK DRIVES WILL BE INSTALLED BY CUSTOMER ON 6U X 160mm CARDS TO THE LEFT AND RIGHT OF THE BACK PLANE.
- WIRE POWER SUPPLY INPUT AS FOLLOWS:

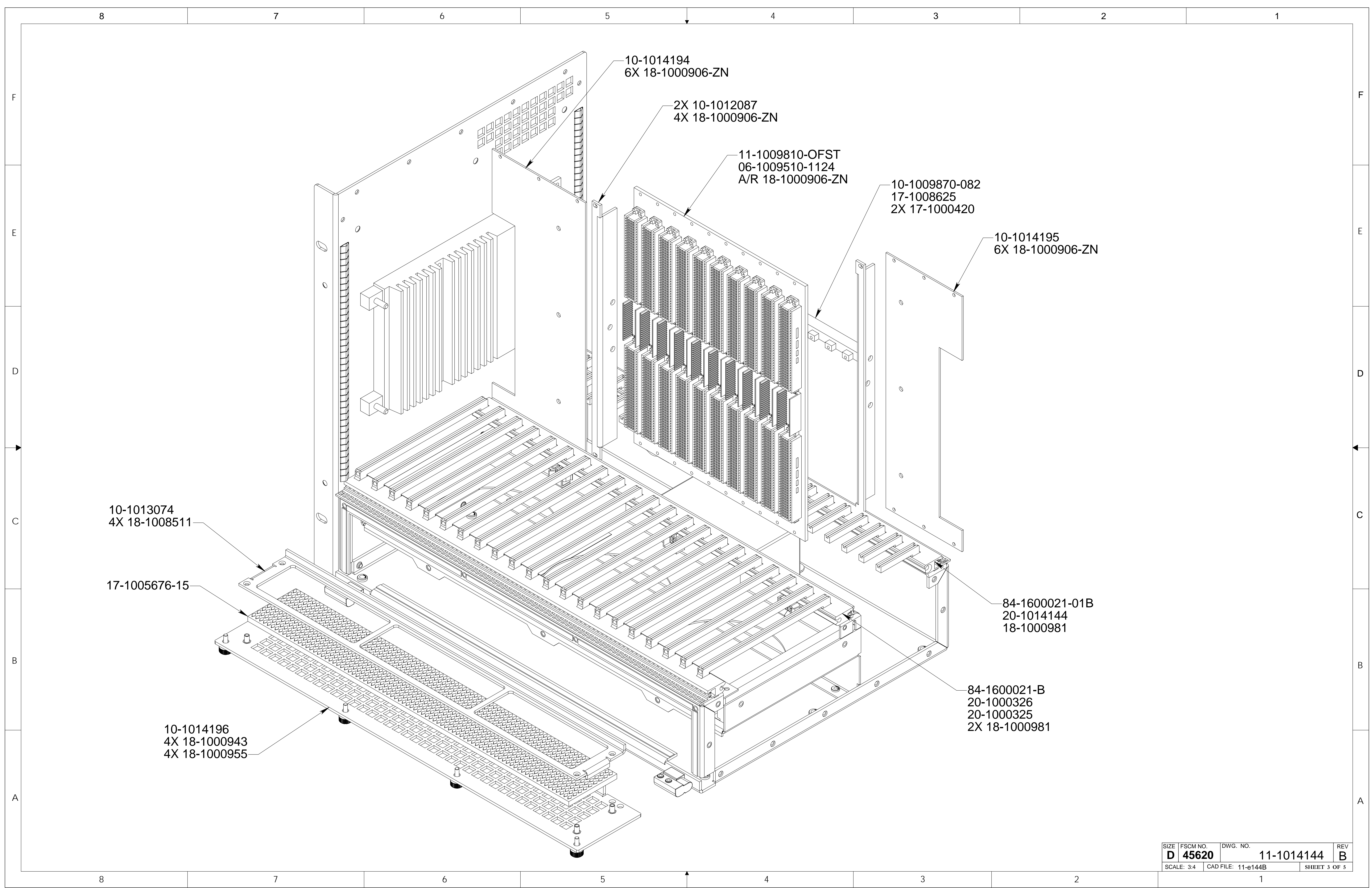


WARNING: THE INFORMATION CONTAINED ON THIS DRAWING IS CONFIDENTIAL AND PROPRIETARY TO DAWN VME PRODUCTS, INC. ANY USE OF THIS INFORMATION OTHER THAN FOR THE PURPOSE IT WAS ORIGINALLY PROVIDED IS STRICTLY PROHIBITED. THIS DRAWING MAY NOT BE REPRODUCED IN FULL OR IN PART NOR INFORMATION CONTAINED UPON IT BE CONVEYED, DISCLOSED, OR USED WITHOUT THE EXPRESSED WRITTEN CONSENT OF DAWN VME PRODUCTS, INC. ANY VIOLATIONS OF THE ABOVE WILL BE PROSECUTED TO THE FULLEST EXTENT OF THE LAW.

UNLESS OTHERWISE SPECIFIED: DIMENSIONS ARE IN INCHES TOLERANCES ARE: FRACTIONAL <N/A> ANGULAR: ±1° XX ±.010 XXX ±.005 MATL:		INTERNAL REF		Dawn VME Products, Inc. 47915 Westinghouse Drive, Fremont, Ca. 94539	
APPROVALS		DATE		TITLE:	
ENGR J HERNANDEZ		3/10/05		CHASSIS, VME64X, 10 SLT, INJ/EJT, 9UX12, W/2 VICOR PS	
DRAWN J HERNANDEZ		3/10/05		SIZE FSCM NO. DWG. NO. REV	
ENG APPR.				D 45620 11-1014144 B	
ISSUED				SCALE: 3:4 CAD FILE: 11-e144B SHEET 1 OF 5	
DO NOT SCALE DRAWING					



SIZE	FSCM NO.	DWG. NO.	REV
D	45620	11-1014144	B
SCALE: 3:4	CAD FILE: 11-e144B	SHEET 2 OF 5	



8

7

6

5

4

3

2

1

F

E

D

C

B

A

F

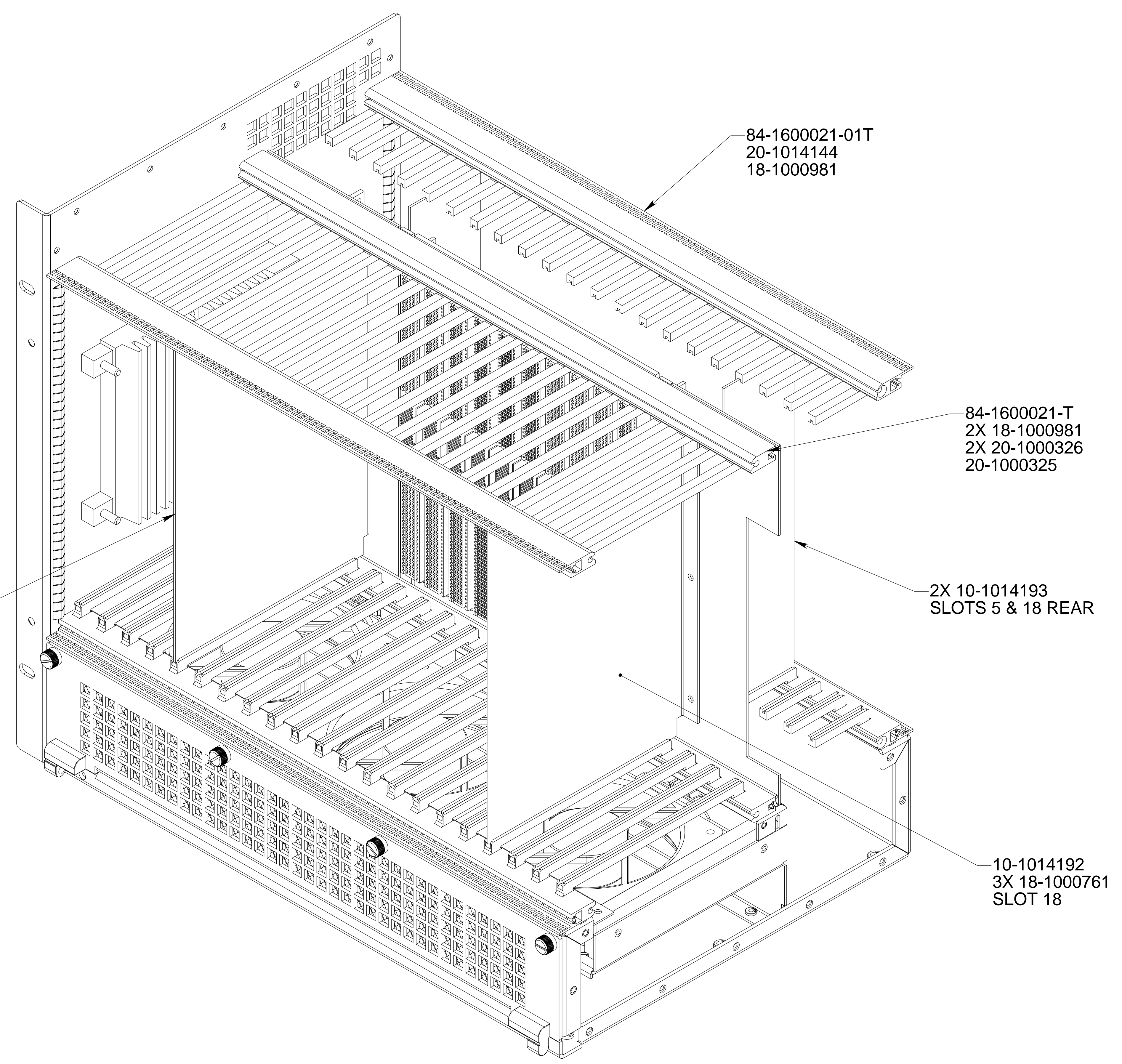
E

D

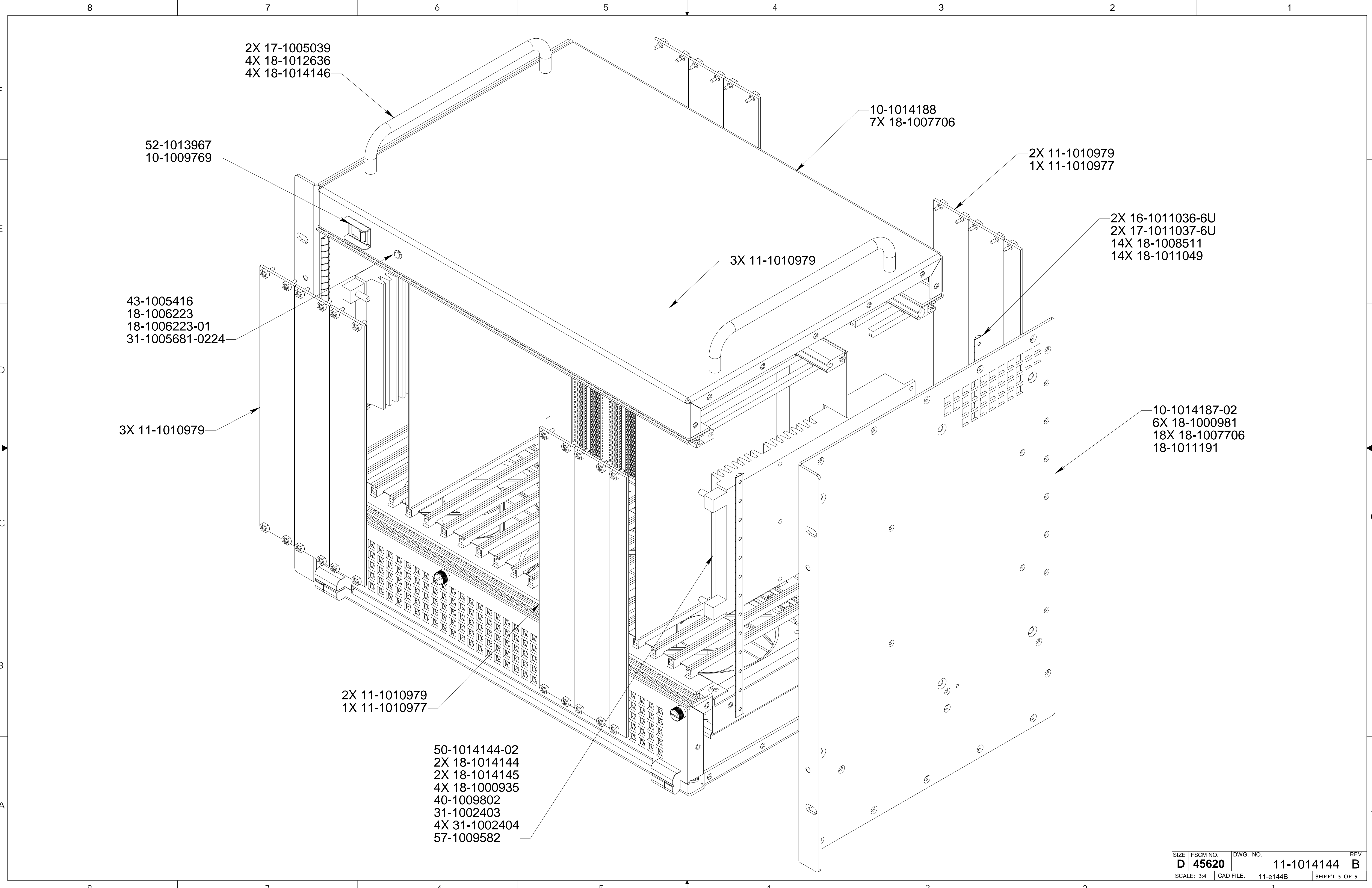
C

B

A



SIZE	FSCM NO.	DWG. NO.	REV
D	45620	11-1014144	B
SCALE: 3:4	CAD FILE: 11-e144B	SHEET 4 OF 5	



2X 17-1005039
4X 18-1012636
4X 18-1014146

52-1013967
10-1009769

10-1014188
7X 18-1007706

2X 11-1010979
1X 11-1010977

2X 16-1011036-6U
2X 17-1011037-6U
14X 18-1008511
14X 18-1011049

43-1005416
18-1006223
18-1006223-01
31-1005681-0224

3X 11-1010979

3X 11-1010979

10-1014187-02
6X 18-1000981
18X 18-1007706
18-1011191

2X 11-1010979
1X 11-1010977

50-1014144-02
2X 18-1014144
2X 18-1014145
4X 18-1000935
40-1009802
31-1002403
4X 31-1002404
57-1009582

SIZE	FSCM NO.	DWG. NO.	REV
D	45620	11-1014144	B
SCALE: 3:4	CAD FILE: 11-e144B	SHEET 5 OF 5	