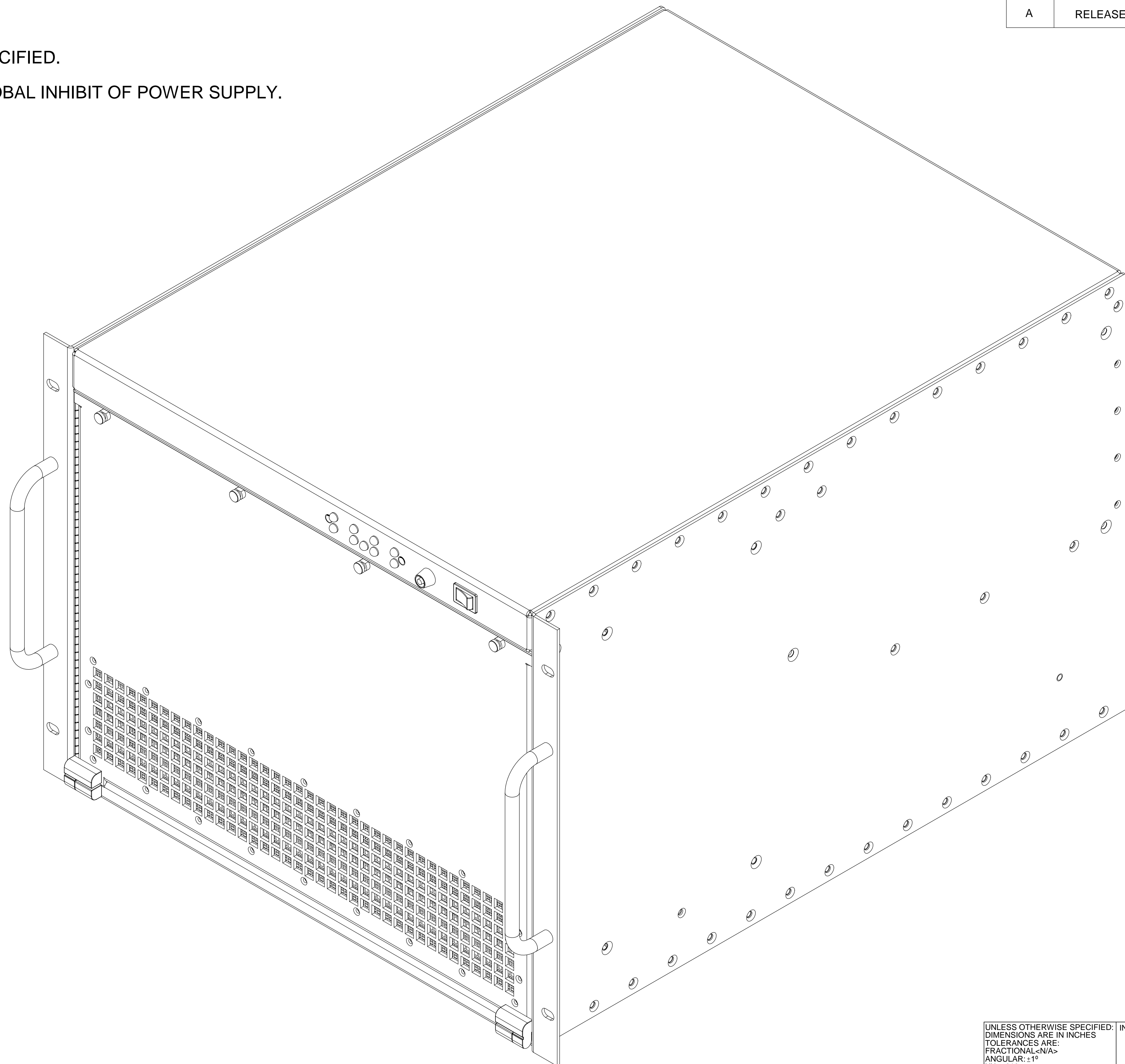


| REVISIONS | | | |
|-----------|----------------------|------|---------|
| REV. | DESCRIPTION | APPD | DATE |
| A | RELEASE PER ECO 4739 | JH | 5/25/05 |

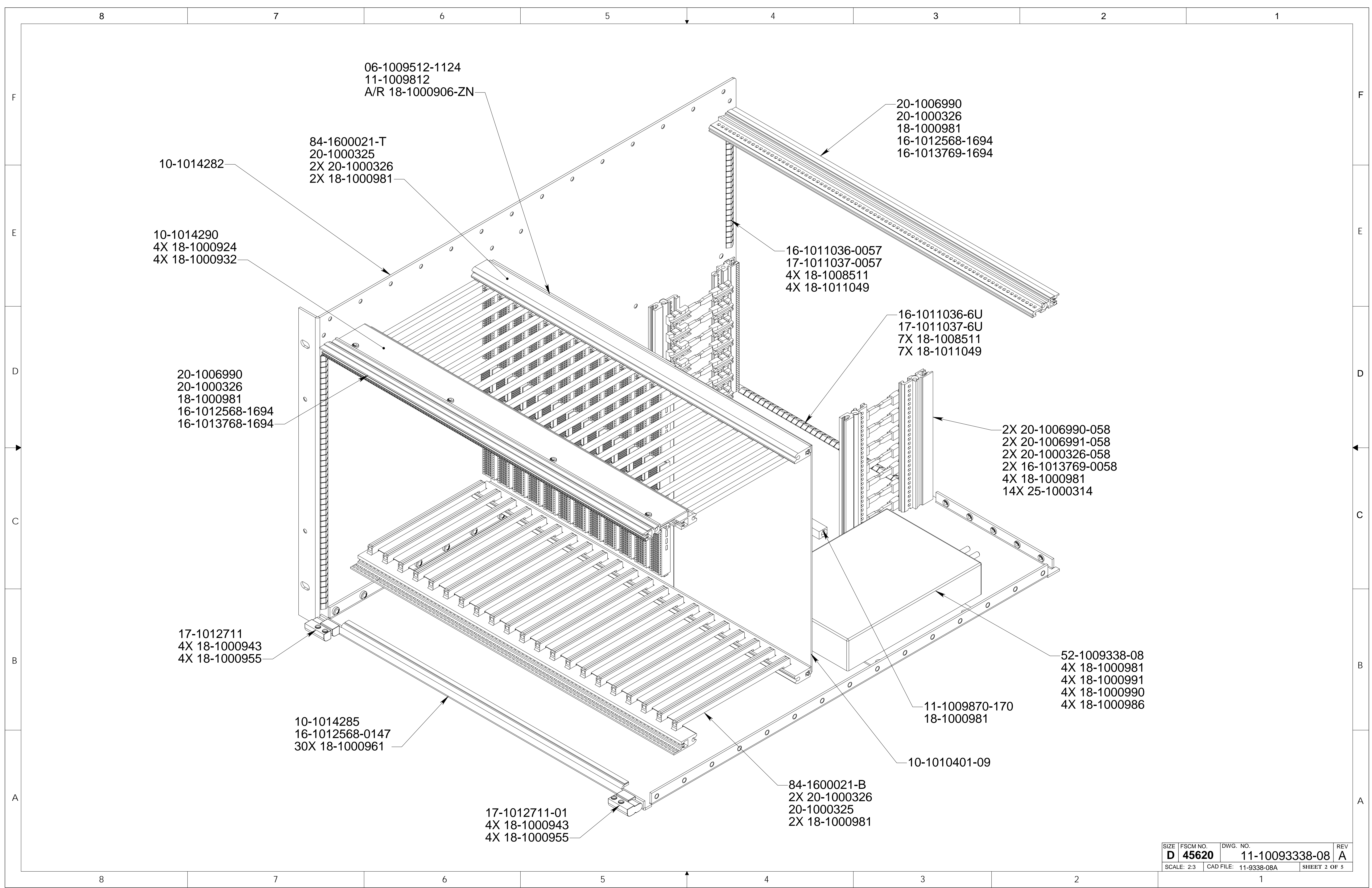
NOTES: UNLESS OTHERWISE SPECIFIED.

1. ON/OFF SWITCH WIRED TO GLOBAL INHIBIT OF POWER SUPPLY.



WARNING: THE INFORMATION CONTAINED ON THIS DRAWING IS CONFIDENTIAL AND PROPRIETARY TO DAWN VME PRODUCTS, INC. ANY USE OF THIS INFORMATION OTHER THAN FOR THE PURPOSE IT WAS ORIGINALLY PROVIDED IS STRICTLY PROHIBITED. THIS DRAWING MAY NOT BE REPRODUCED IN FULL OR IN PART NOR INFORMATION CONTAINED UPON IT BE CONVEYED, DISCLOSED, OR USED WITHOUT THE EXPRESSED WRITTEN CONSENT OF DAWN VME PRODUCTS, INC. ANY VIOLATIONS OF THE ABOVE WILL BE PROSECUTED TO THE FULLEST EXTENT OF THE LAW.

| | | | | | |
|--|--|-------------------|---------|---|-----------------------|
| UNLESS OTHERWISE SPECIFIED: DIMENSIONS ARE IN INCHES TOLERANCES ARE: FRACTIONAL <N/A> ANGULAR: ±1° XX ±.010 XXX ±.005 MATL: | | INTERNAL REF | | Dawn VME Products, Inc. 47915 Westinghouse Drive, Fremont, Ca. 94539 TITLE: 8U X 22.0 12 SLOT, VME 64X, 400W P/S | |
| FINISH | | APPROVALS | DATE | | |
| DO NOT SCALE DRAWING | | ENGR J HERNANDEZ | 5/25/05 | SIZE D | FSCM NO. 45620 |
| | | DRAWN J HERNANDEZ | 5/25/05 | DWG. NO. 11-1009338-08 | REV A |
| | | ENG APPR. | | SCALE: 2:3 | CAD FILE: 11-9338-08A |
| | | ISSUED | | SHEET 1 OF 5 | |



8

7

6

5

4

3

2

1

F

E

D

C

B

A

F

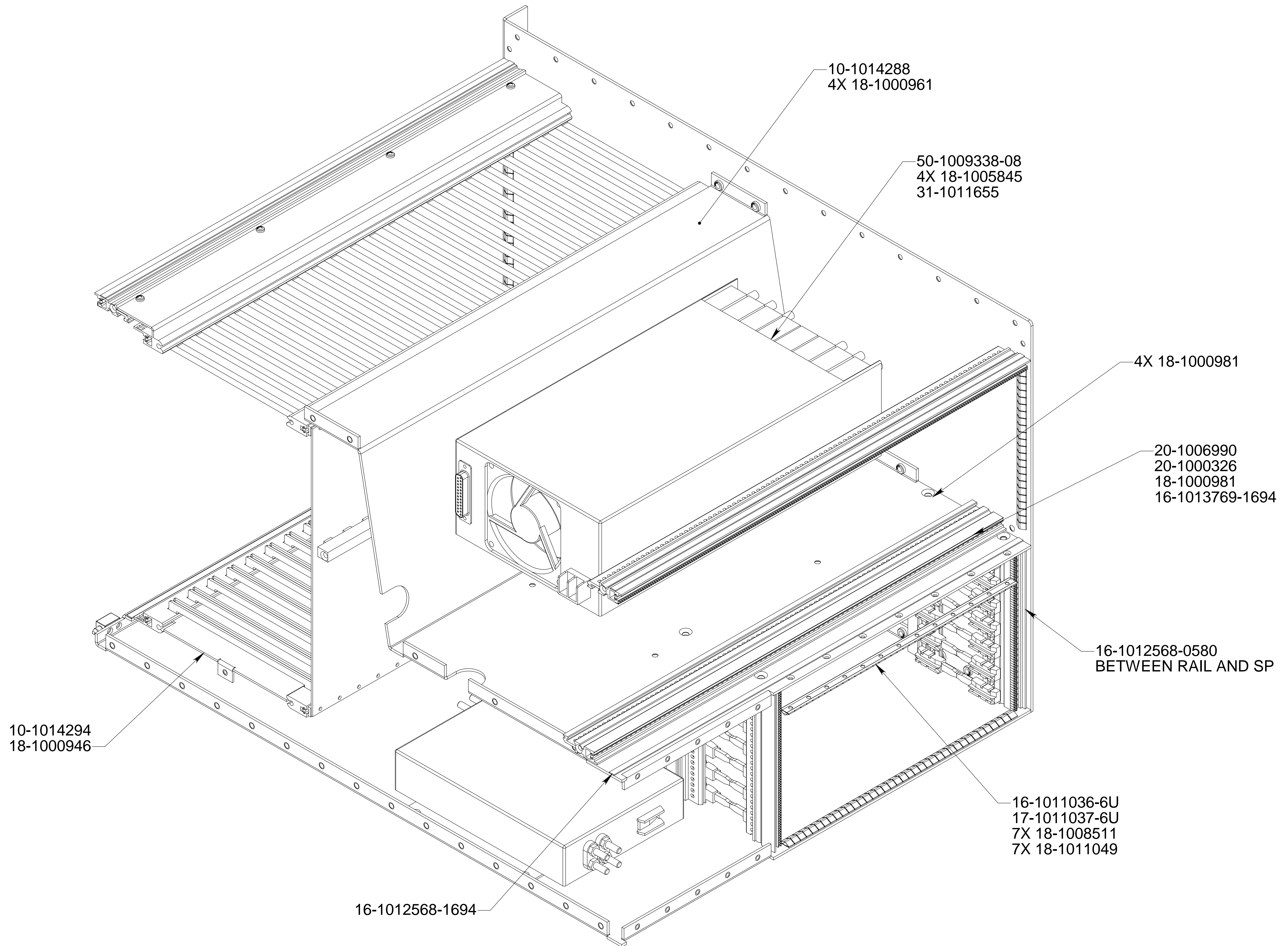
E

D

C

B

A



| | | | |
|------------|----------|-----------------------|--------------|
| SIZE | FSCM NO. | DWG. NO. | REV |
| D | 45620 | 11-1009338-08 | A |
| SCALE: 2:3 | | CAD FILE: 11-9338-08A | SHEET 3 OF 5 |

8

7

6

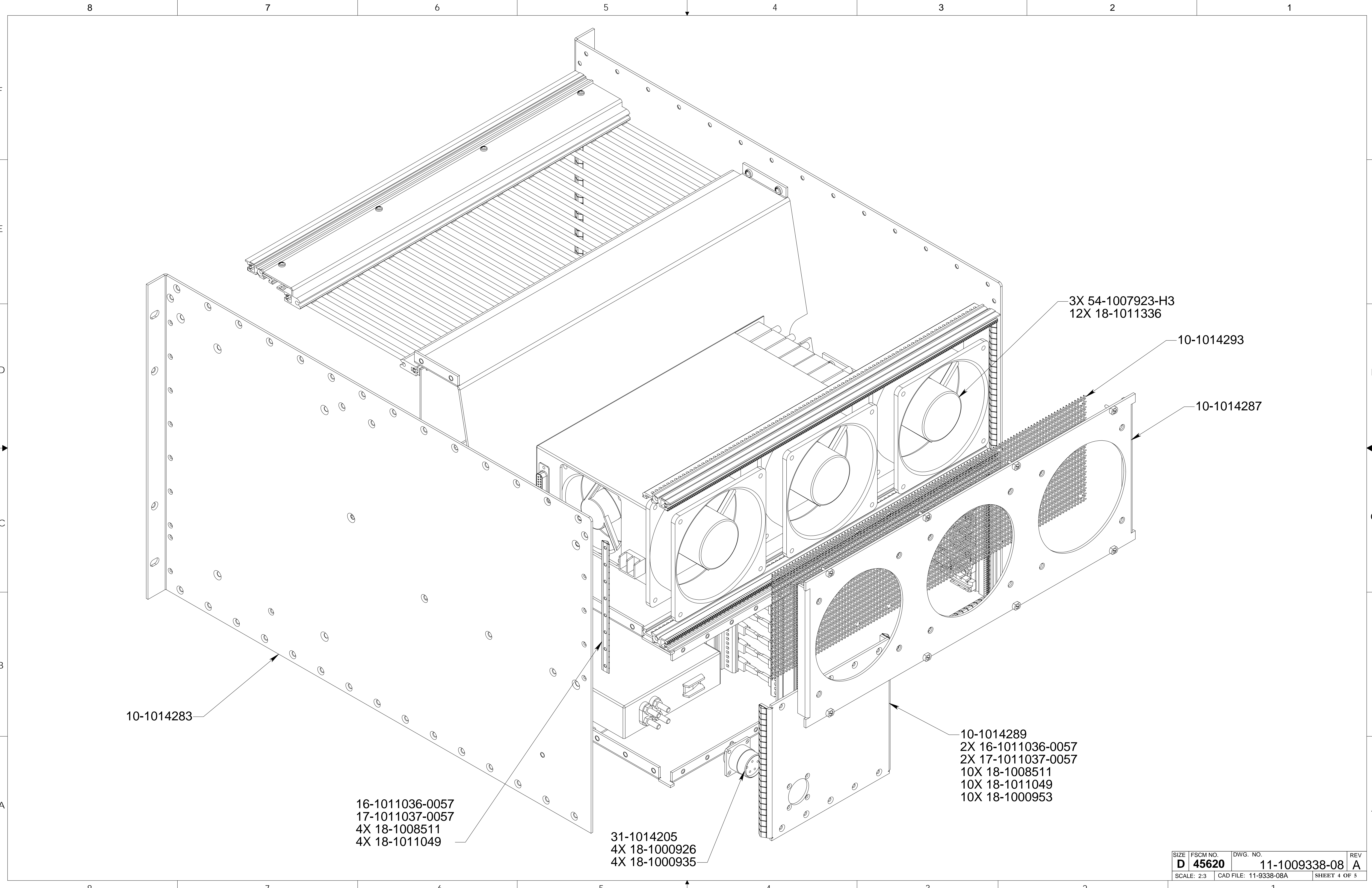
5

4

3

2

1



10-1014283

16-1011036-0057
 17-1011037-0057
 4X 18-1008511
 4X 18-1011049

31-1014205
 4X 18-1000926
 4X 18-1000935

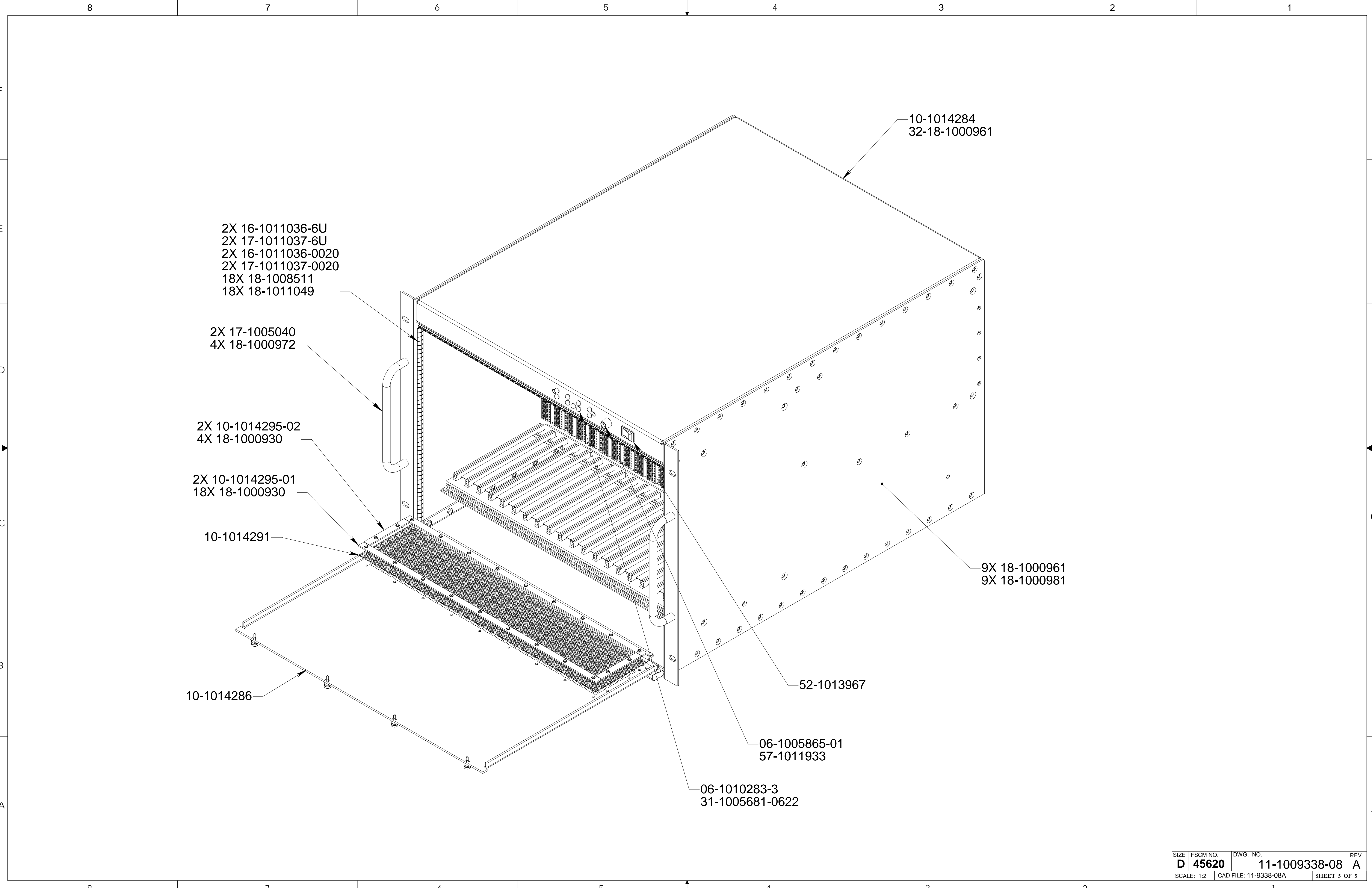
10-1014289
 2X 16-1011036-0057
 2X 17-1011037-0057
 10X 18-1008511
 10X 18-1011049
 10X 18-1000953

3X 54-1007923-H3
 12X 18-1011336

10-1014293

10-1014287

| | | | |
|------------|----------|-----------------------|--------------|
| SIZE | FSCM NO. | DWG. NO. | REV |
| D | 45620 | 11-1009338-08 | A |
| SCALE: 2:3 | | CAD FILE: 11-9338-08A | SHEET 4 OF 5 |



2X 16-1011036-6U
 2X 17-1011037-6U
 2X 16-1011036-0020
 2X 17-1011037-0020
 18X 18-1008511
 18X 18-1011049

2X 17-1005040
 4X 18-1000972

2X 10-1014295-02
 4X 18-1000930

2X 10-1014295-01
 18X 18-1000930

10-1014291

10-1014286

10-1014284
 32-18-1000961

9X 18-1000961
 9X 18-1000981

52-1013967

06-1005865-01
 57-1011933

06-1010283-3
 31-1005681-0622

| | | | |
|------------|----------|-----------------------|--------------|
| SIZE | FSCM NO. | DWG. NO. | REV |
| D | 45620 | 11-1009338-08 | A |
| SCALE: 1:2 | | CAD FILE: 11-9338-08A | SHEET 5 OF 5 |