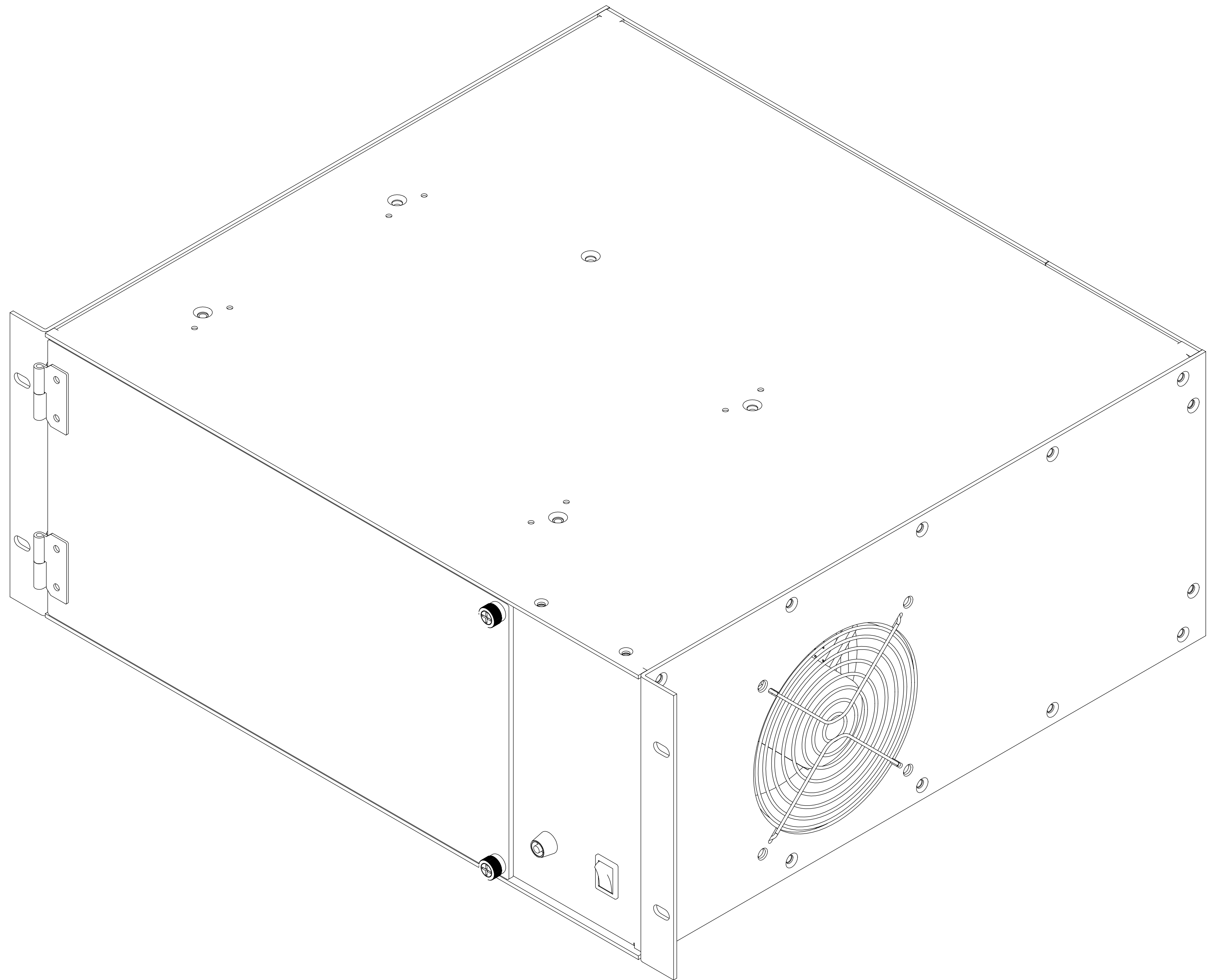


REVISIONS			
REV.	DESCRIPTION	APPD	DATE
A	RELEASE PER ECO 4744	JH	6/8/05



WARNING: THE INFORMATION CONTAINED ON THIS DRAWING IS CONFIDENTIAL AND PROPRIETARY TO DAWN VME PRODUCTS, INC. ANY USE OF THIS INFORMATION OTHER THAN FOR THE PURPOSE IT WAS ORIGINALLY PROVIDED IS STRICTLY PROHIBITED. THIS DRAWING MAY NOT BE REPRODUCED IN FULL OR IN PART NOR INFORMATION CONTAINED UPON IT BE CONVEYED, DISCLOSED, OR USED WITHOUT THE EXPRESSED WRITTEN CONSENT OF DAWN VME PRODUCTS, INC. ANY VIOLATIONS OF THE ABOVE WILL BE PROSECUTED TO THE FULLEST EXTENT OF THE LAW.

UNLESS OTHERWISE SPECIFIED:  
 DIMENSIONS ARE IN INCHES  
 TOLERANCES ARE:  
 FRACTIONAL <N/A>  
 ANGULAR: ±1°  
 XX ±.010  
 XXX ±.005  
 MATL:  
 FINISH  
 DO NOT SCALE DRAWING

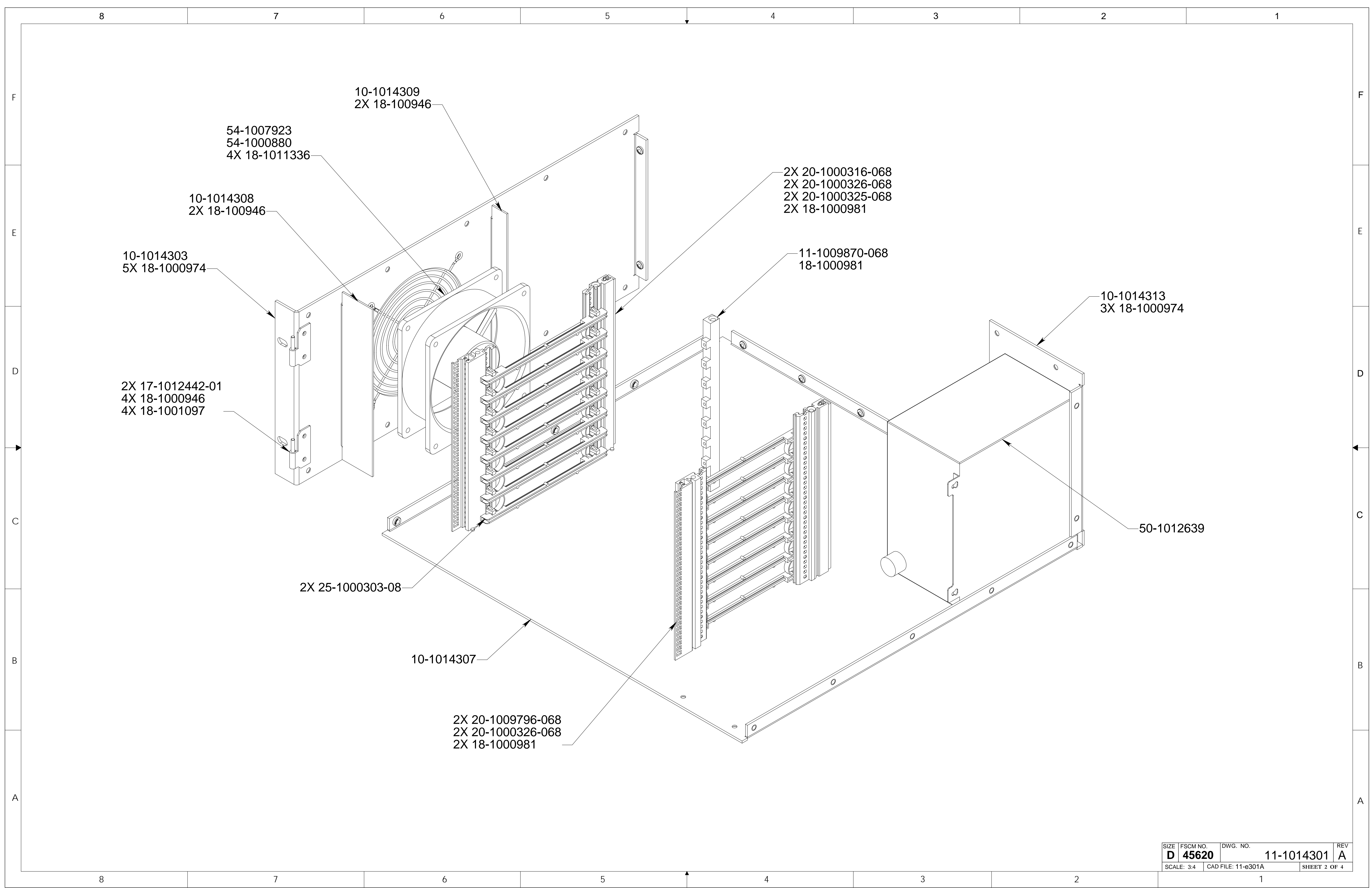
INTERNAL REF	
APPROVALS	DATE
ENGR J HERNANDEZ	6/8/05
DRAWN J HERNANDEZ	6/8/05
ENG APPR.	
ISSUED	

**Dawn VME Products, Inc.**  
 47915 Westinghouse Drive, Fremont, Ca. 94539

**TITLE:**  
**CHASSIS, 4U, 8 SLOT,  
 VME 64X, 400W ATX P/S**

SIZE	FSCM NO.	DWG. NO.	REV
D	45620	11-1014301	A

SCALE: 3:4    CAD FILE: 11-e301A    SHEET 1 OF 4



10-1014309  
2X 18-100946

54-1007923  
54-1000880  
4X 18-1011336

10-1014308  
2X 18-100946

10-1014303  
5X 18-1000974

2X 17-1012442-01  
4X 18-1000946  
4X 18-1001097

2X 25-1000303-08

10-1014307

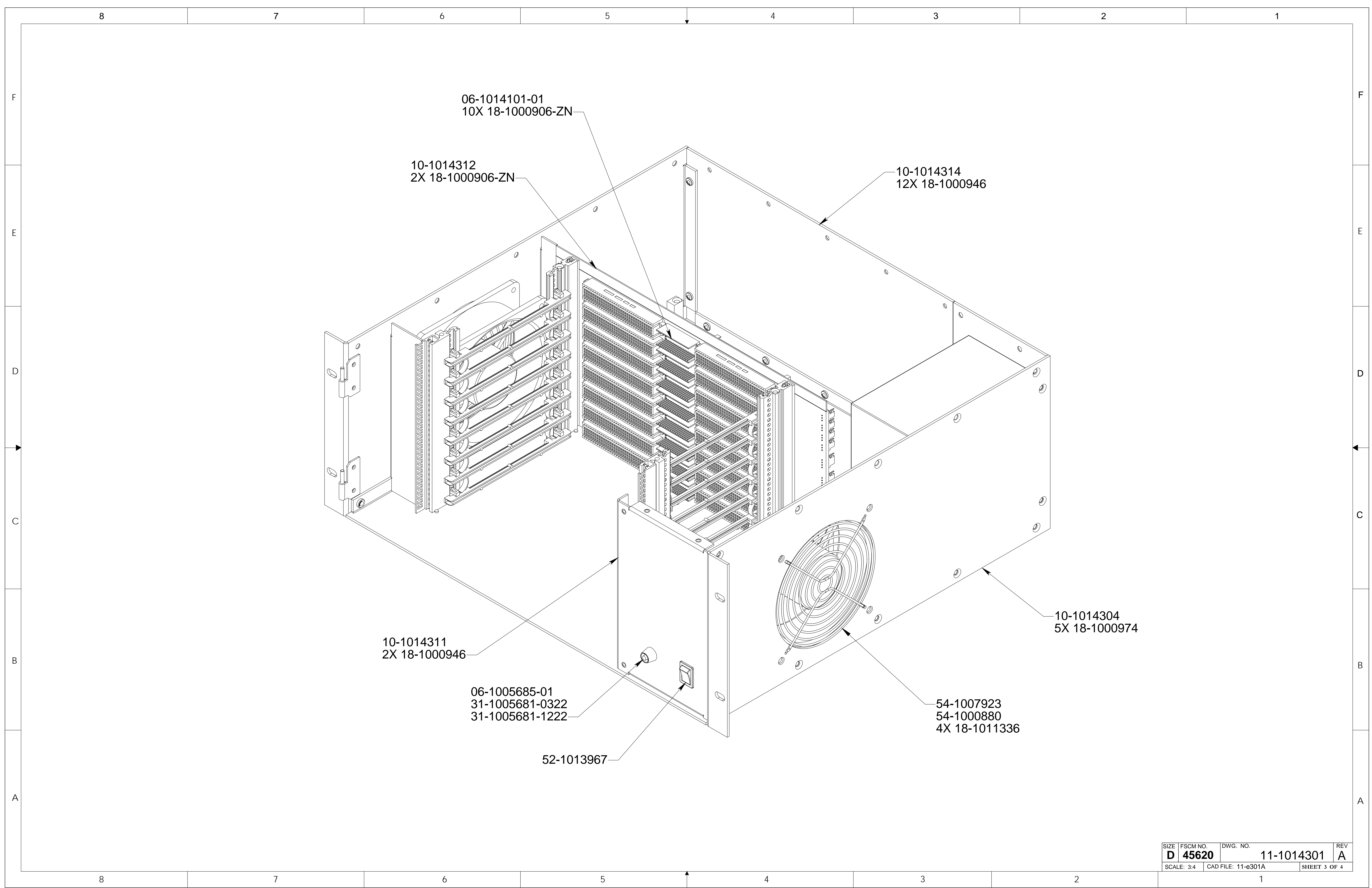
2X 20-1009796-068  
2X 20-1000326-068  
2X 18-1000981

2X 20-1000316-068  
2X 20-1000326-068  
2X 20-1000325-068  
2X 18-1000981

11-1009870-068  
18-1000981

10-1014313  
3X 18-1000974

50-1012639



06-1014101-01  
10X 18-1000906-ZN

10-1014312  
2X 18-1000906-ZN

10-1014314  
12X 18-1000946

10-1014311  
2X 18-1000946

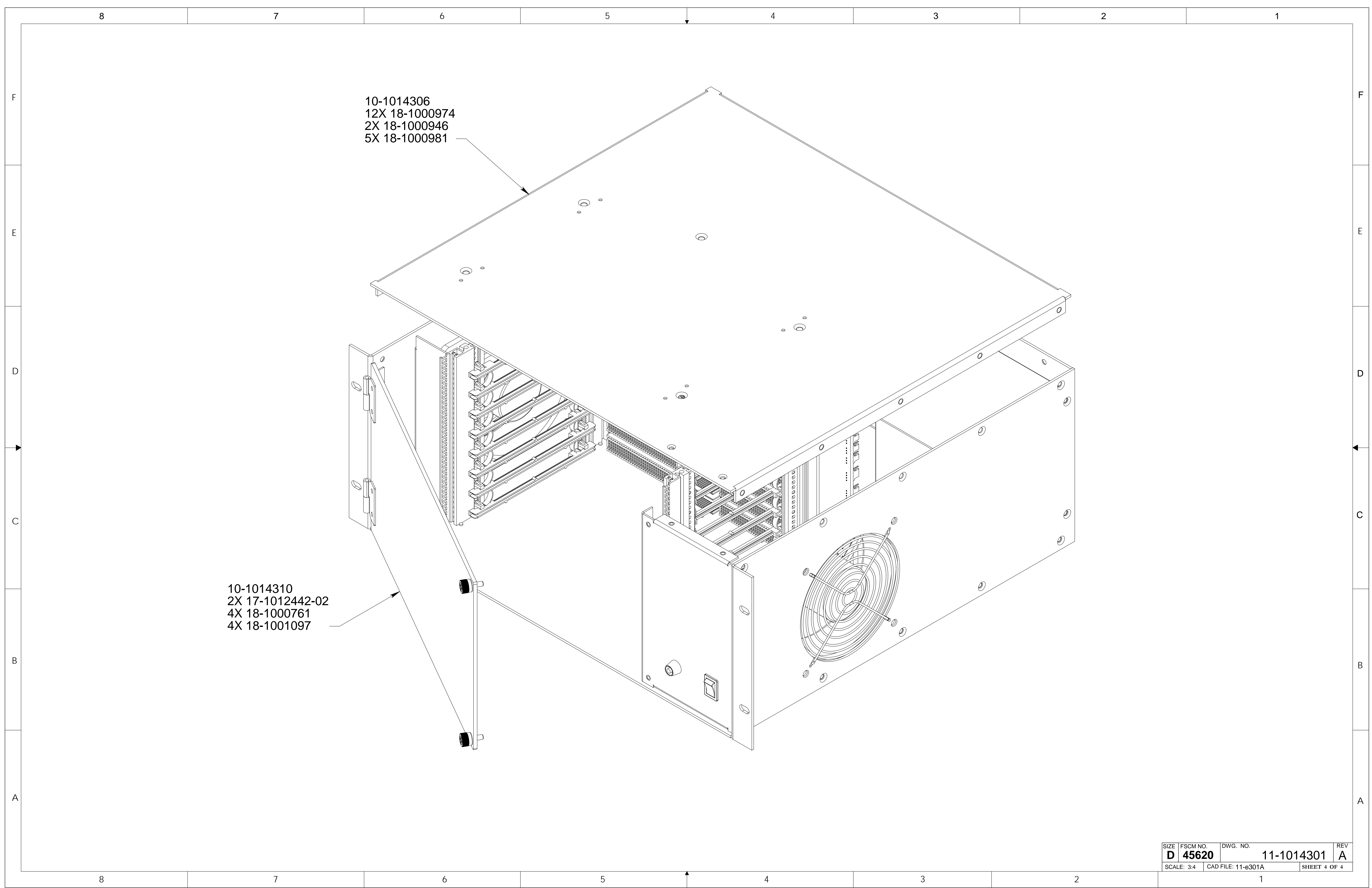
06-1005685-01  
31-1005681-0322  
31-1005681-1222

52-1013967

10-1014304  
5X 18-1000974

54-1007923  
54-1000880  
4X 18-1011336

SIZE	FSCM NO.	DWG. NO.	REV
D	45620	11-1014301	A
SCALE: 3:4		CAD FILE: 11-e301A	SHEET 3 OF 4



10-1014306  
12X 18-1000974  
2X 18-1000946  
5X 18-1000981

10-1014310  
2X 17-1012442-02  
4X 18-1000761  
4X 18-1001097