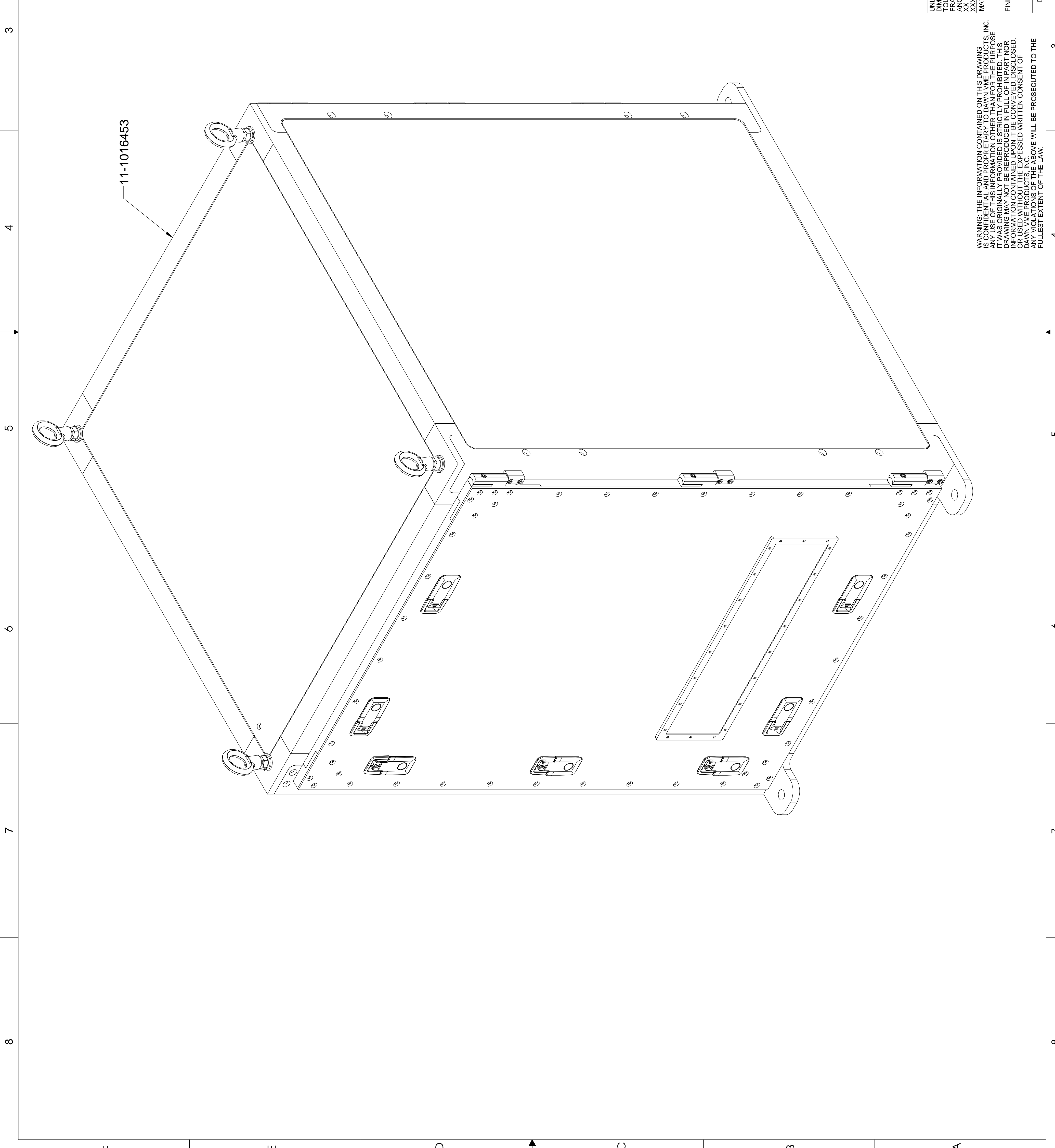


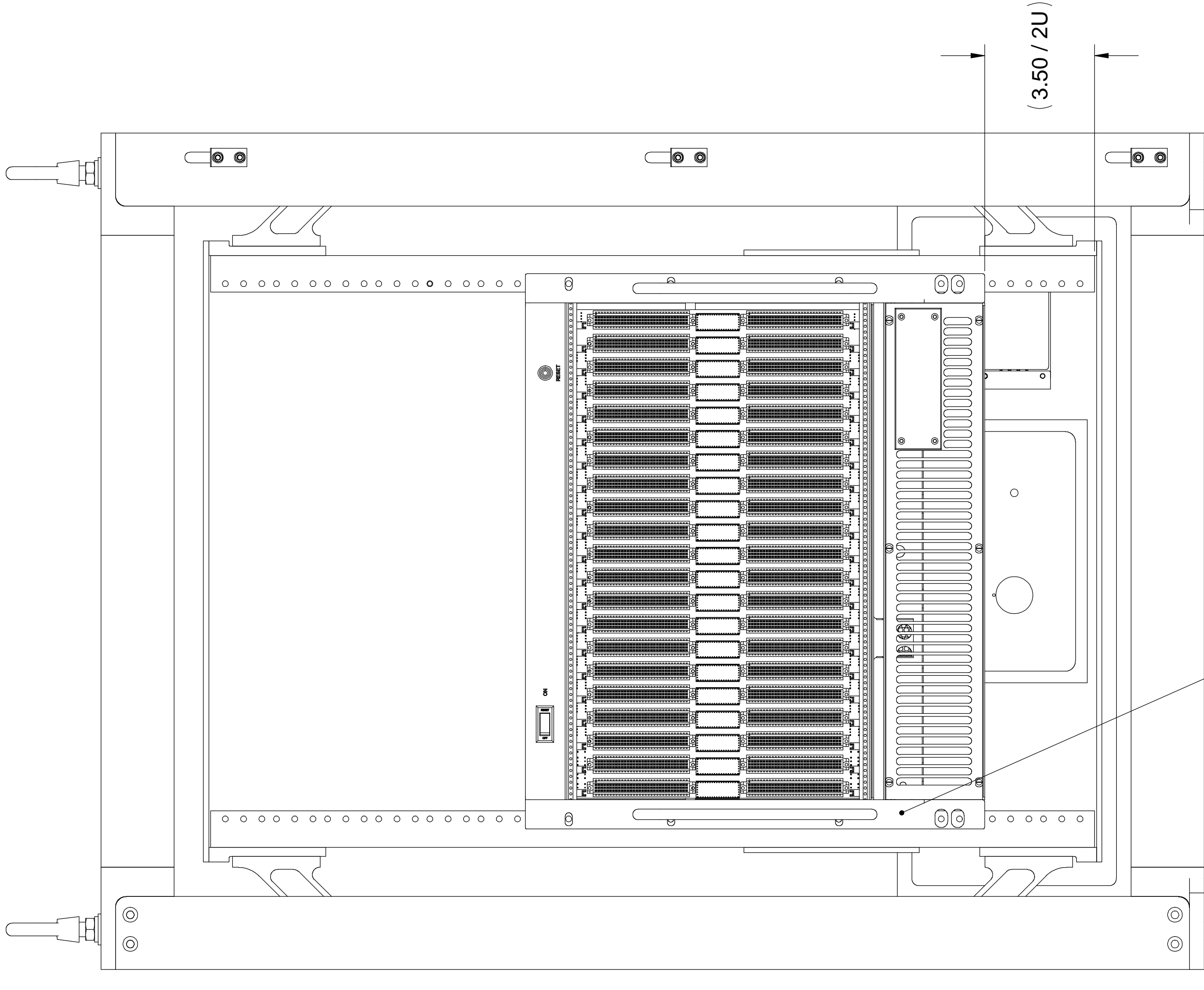
REVISIONS			
REV.	DESCRIPTION	APPD	DATE
A	RELEASE PER ECO 6289	JH	9/21/09
B	UPDATED ASSY PER ECO 6448	JH	1/27/10



NOTES: UNLESS OTHERWISE SPECIFIED.
 1. REFERENCE SEPERATE WIRING DIAGRAM 57-1016449

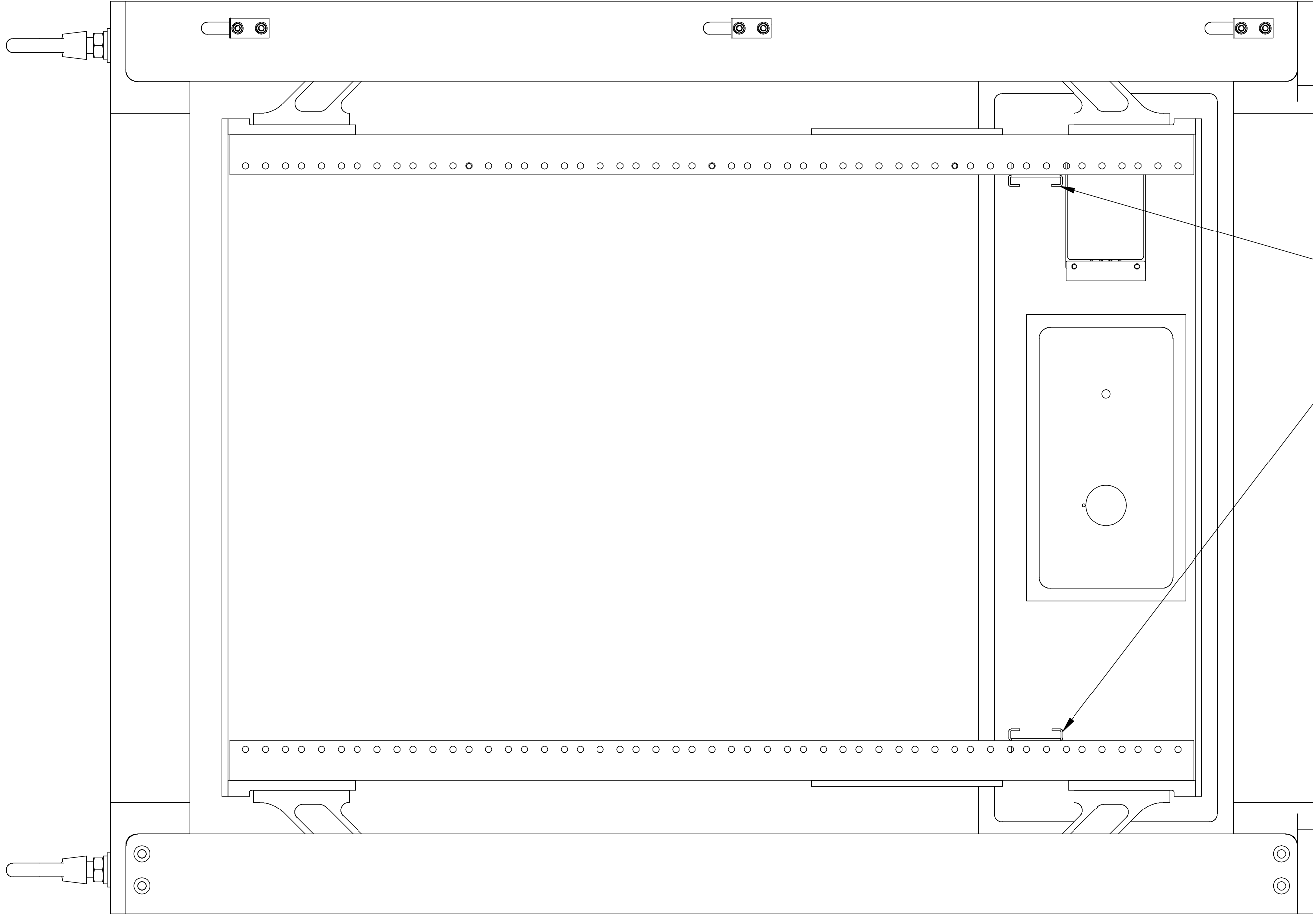
UNLESS OTHERWISE SPECIFIED: DIMENSIONS ARE IN INCHES TOLERANCES ARE: FRACTIONAL-N/A ANGULAR: ±1° XX ±.010 XXX ±.005 MATERIAL:		INTERNAL REF	DATE	
FINISH		ENGR	J HERNANDEZ	9/14/09
DO NOT SCALE DRAWING		DRAWN	J HERNANDEZ	9/14/09
		ENG APPR.		
		ISSUED		
TITLE:		Dawn VME Products, Inc. 47915 Westinghouse Drive, Fremont, Ca. 94539		
CABINET, SHOCK ISOLATED, 17U, W/ 9U CHASSIS		REV B		
SIZE FSCM NO.		DWG. NO. 11-1016449		
D 45620		SCALE: 1:3		
		CAD FILE: 11-g449B		
		SHEET 1 OF 4		

WARNING: THE INFORMATION CONTAINED ON THIS DRAWING IS CONFIDENTIAL AND PROPRIETARY TO DAWN VME PRODUCTS, INC. ANY USE OF THIS INFORMATION OTHER THAN FOR THE PURPOSE FOR WHICH IT WAS ORIGINALLY PROVIDED IS STRICTLY PROHIBITED. THIS DRAWING IS THE PROPERTY OF DAWN VME PRODUCTS, INC. AND ALL INFORMATION CONTAINED HEREON IS TO BE KEPT CONFIDENTIAL, DISCLOSED, OR USED WITHOUT THE EXPRESSED WRITTEN CONSENT OF DAWN VME PRODUCTS, INC. ANY VIOLATIONS OF THE ABOVE WILL BE PROSECUTED TO THE FULLEST EXTENT OF THE LAW.



11-1010638-54
 6X 18-1012636
 6X 18-1010487
 6X 18-1000990

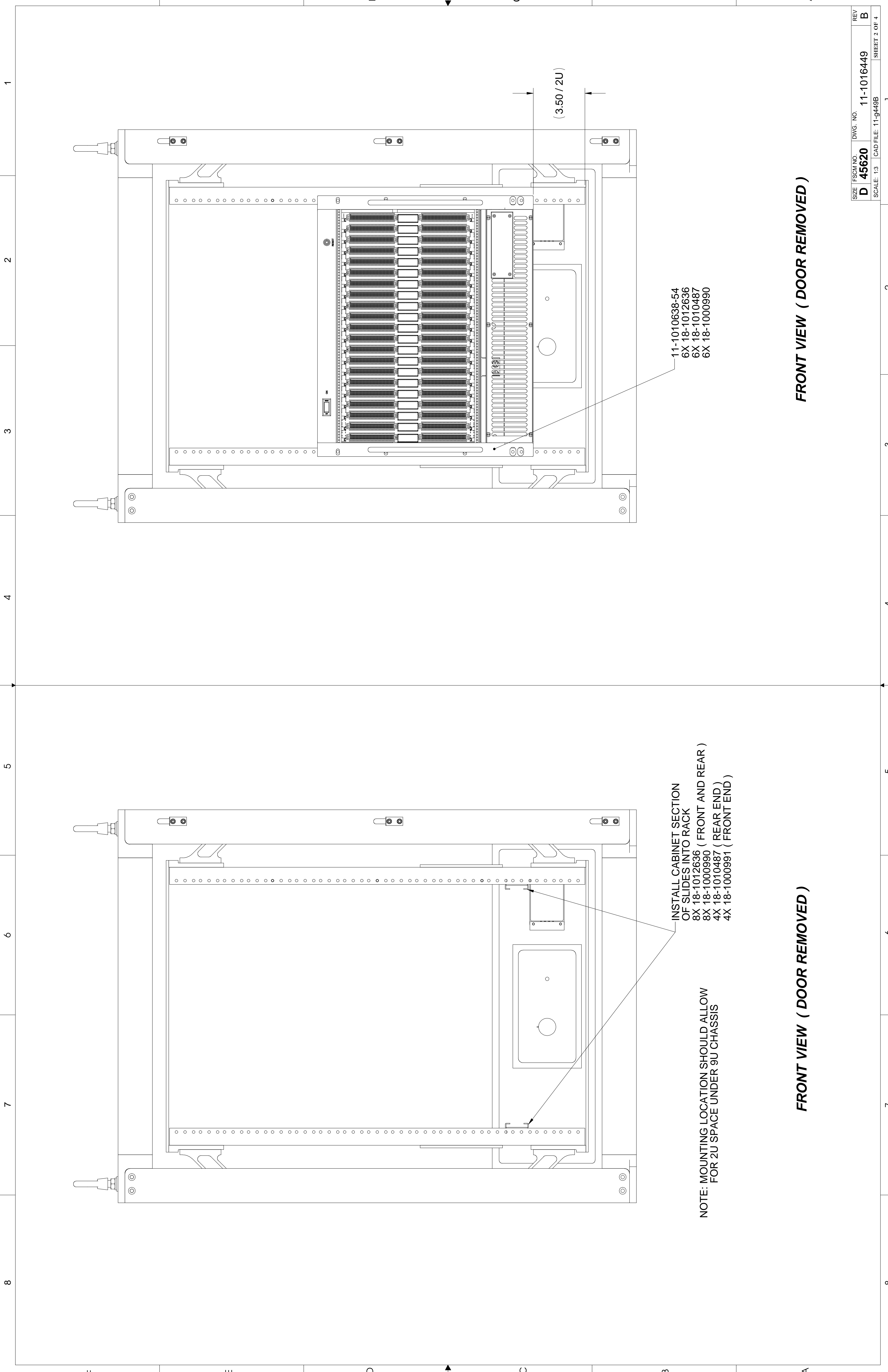
FRONT VIEW (DOOR REMOVED)

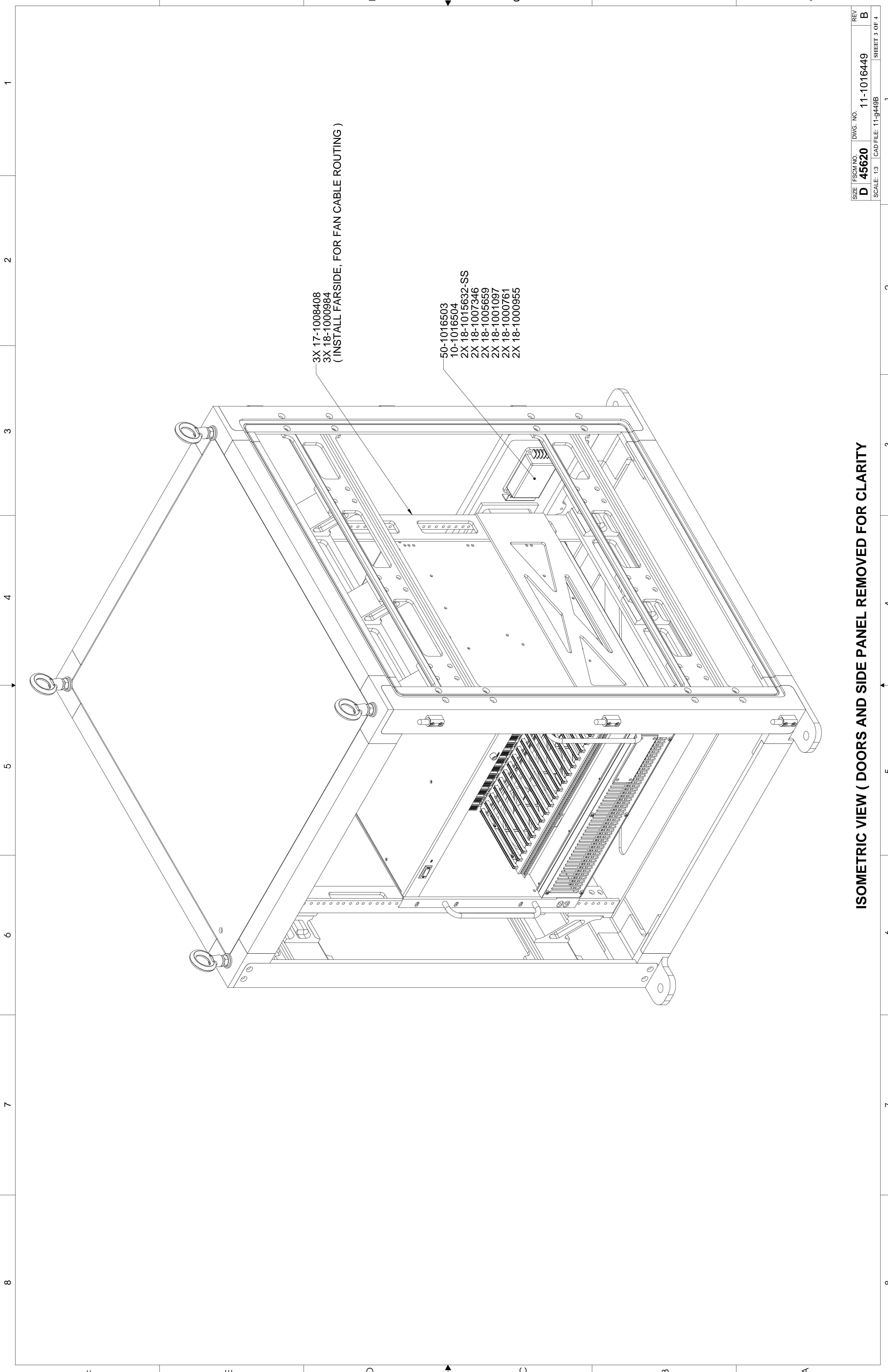


INSTALL CABINET SECTION
 OF SLIDES INTO RACK
 8X 18-1012636 (FRONT AND REAR)
 8X 18-1000990
 4X 18-1010487 (REAR END)
 4X 18-1000991 (FRONT END)

NOTE: MOUNTING LOCATION SHOULD ALLOW
 FOR 2U SPACE UNDER 9U CHASSIS

FRONT VIEW (DOOR REMOVED)



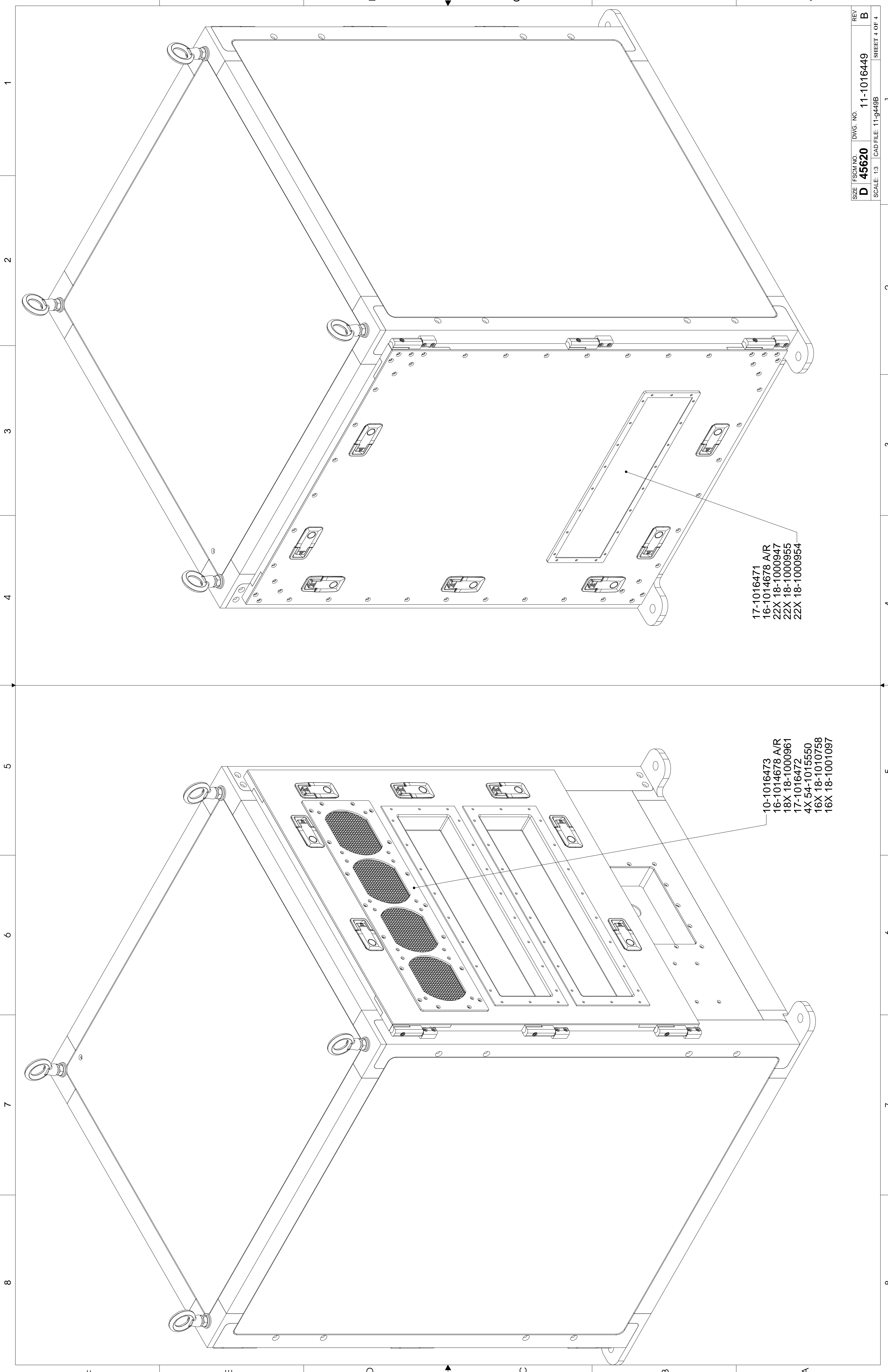


3X 17-1008408
3X 18-1000984
(INSTALL FAR SIDE, FOR FAN CABLE ROUTING)

50-1016503
10-1016504
2X 18-1015632-SS
2X 18-1007346
2X 18-1005659
2X 18-1001097
2X 18-1000761
2X 18-1000955

SIZE	FSCM NO.	DWG. NO.	REV.
D	45620	11-1016449	B
SCALE: 1:3		CAD FILE: 11-g449B	SHEET 3 OF 4

ISOMETRIC VIEW (DOORS AND SIDE PANEL REMOVED FOR CLARITY



17-1016471
 16-1014678 A/R
 22X 18-1000947
 22X 18-1000955
 22X 18-1000954

10-1016473
 16-1014678 A/R
 18X 18-1000961
 17-1016472
 4X 54-1015550
 16X 18-1010758
 16X 18-1001097

1 2 3 4 5 6 7 8

F E D C B A