

# CompactPCI™ Prototyping Boards

Models 836 and 875

## Features

- ◆ Model 875 is 3U x 160mm
- ◆ Model 836 is 6U x 160mm
- ◆ Compatible with PICMG 2.0 Revision 2.1
- ◆ Supplied with all 2mm connectors installed
- ◆ 0.1 inch Pin Grid Array
- ◆ 0.041 inch grid pitch
- ◆ High-current +5VDC and Ground grids
- ◆ Power connections included for all compactPCI voltages
- ◆ 2 oz copper power and ground planes reduce voltage drop
- ◆ 1101.10 front panel included

## Overview

Models 875 and 836 CompactPCI™ cPCI prototyping boards are another in the growing line of quality test and development accessories available from Dawn VME Products.

Manufactured from high-quality FR4, epoxy-glass laminate, Models 875 and 836 are sturdy and reliable methods for system prototyping, product development and even low-quantity production requirements.

The J1 and J2 connectors are factory installed to this PICMG 2.0 R 2.1 compliant prototyping board. Dawn offers a superior-quality IEEE 1101.10 front panel for installation convenience.

### Ordering Numbers

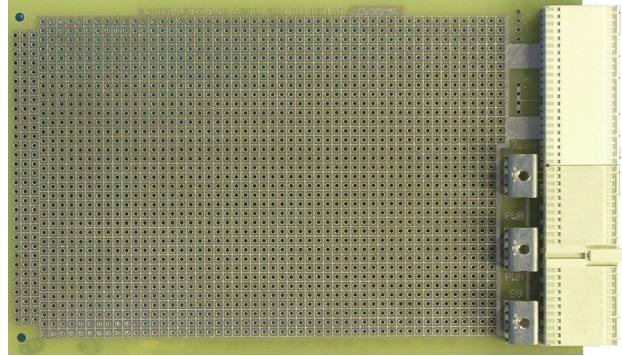
Model 875 (3U)	11-1010875
Model 836 (6U)	11-1010836

## Technical Specifications

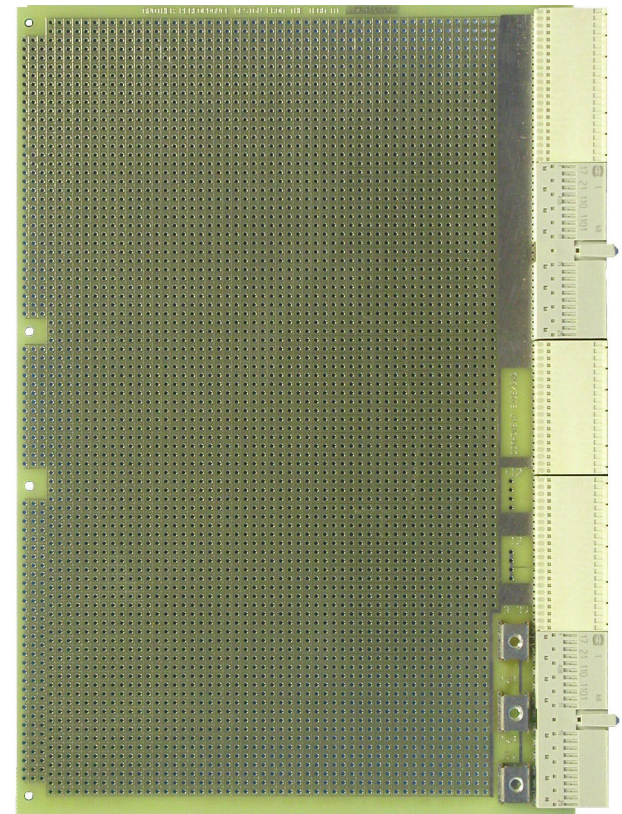
### Mechanical

**Compatibility:** PICMG Specification 2.0 Revision 2.1  
**PCB Material:** FR4 and fully compliant with IPC-4101/26  
**PCB Design Construction:** High-performance microstrip  
**Power and Ground Planes:** 2 oz copper  
**Weight:** 1.7 oz

## Model 875



## Model 836



### Environmental

**Storage Temperature:** -20°C to +85°C  
**Operating Temperature:** 0°C to +50°C  
**Humidity:** <95% non-condensing  
**MTBF:** >300,000 hr operating at +40°C