

VME64x Prototyping Boards

Models 44 and 817

Features

- ◆ Model 44: 6U x 160mm
- ◆ Model 817: 6U x 220mm
- ◆ ANSI/VITA 1997 1.1 compatible
- ◆ Both models supplied with J1, J0, & J2 connectors, shipped loose, for installation flexibility
- ◆ 0.1 Inch Pin Grid Array
- ◆ High-current +5VDC and Ground grids
- ◆ Power connections included for all VME64x voltages
- ◆ 0.062 FR-4, with 2-ounce copper layers
- ◆ Tin/lead plated, ready for soldering your components and sockets
- ◆ 1101.10 front panel included

Overview

Models 44 and 817 VME64x prototyping boards are another in the comprehensive family of Dawn's test and development accessory products.

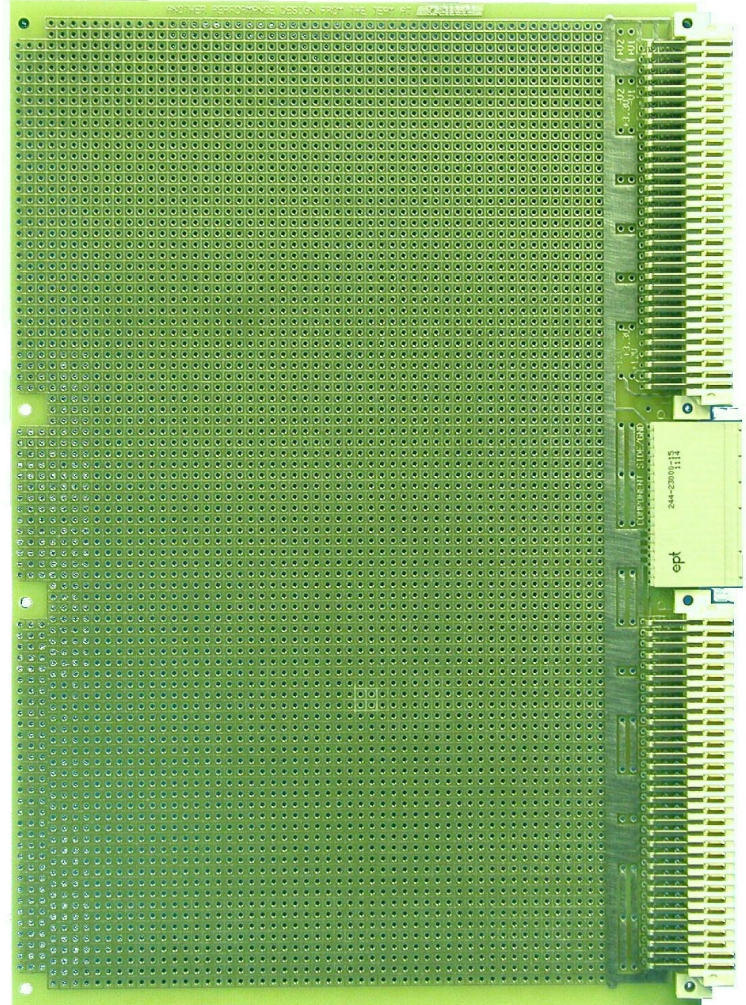
Both boards differ only in depth. Manufactured from high-quality FR4 epoxy-glass laminate, **Models 44 and 817** are sturdy and reliable methods for system prototyping, and represent ideal solutions for product development and low-quantity production requirements.

Both models feature mounting provisions for a standard IEEE 1101.10, 6Ux4HP front panel (sold separately), and ships the J1, J2 & JO connectors ready for customer installation.

Ordering Numbers

Model 44: 11-1010044
Model 817: 11-1012817

Model 44 Shown



Technical Specifications

Mechanical

Compatibility: ANSI/VITA 1997 1.1 and IEEE P1014
PCB Material: FR4 and fully compliant with IPC-4101/26
PCB Design Construction: High-performance microstrip
Power and Ground Planes: 2 oz copper
Weight: 1.7 oz

Environmental

Storage Temperature: -20°C to +85°C
Operating Temperature: 0°C to +50°C
Humidity: <95% non-condensing
MTBF: >300,000 hr operating at +40°C